

AGRIWEALTH PTY LIMITED

**2011 SOFTWOOD TIMBER
PROJECT
&
2011 TIMBER PROJECT**



2020-2021 ANNUAL REPORT

Legal Context

This annual report has been prepared in accordance with Schedule 1 Part 3(h) of the Forestry Management Contract between AgriWealth Pty Limited and the Forestry Commission of New South Wales (now trading as the Forestry Corporation of NSW (FCNSW)) for the 2011 Timber Project.

Background

The 2011 Project is located at Wandalla, 40 kilometres south west of Oberon within the Bathurst Management Area (BMA) of the FCNSW Northern Softwoods Region. The project comprises 50 hectares of plantation that was established in 2012. Planting occurred in winter using GF19 containerised stock.

Plantation Area

A review of the net stocked area of plantation within the Project was undertaken in August of 2020 (Table 1) using recently acquired aerial imagery. This plantation area review has captured some mortality adjacent to a drainage line that has occurred since plantation establishment. Improved mapping data has also allowed for some additional small adjustments to the NSA.

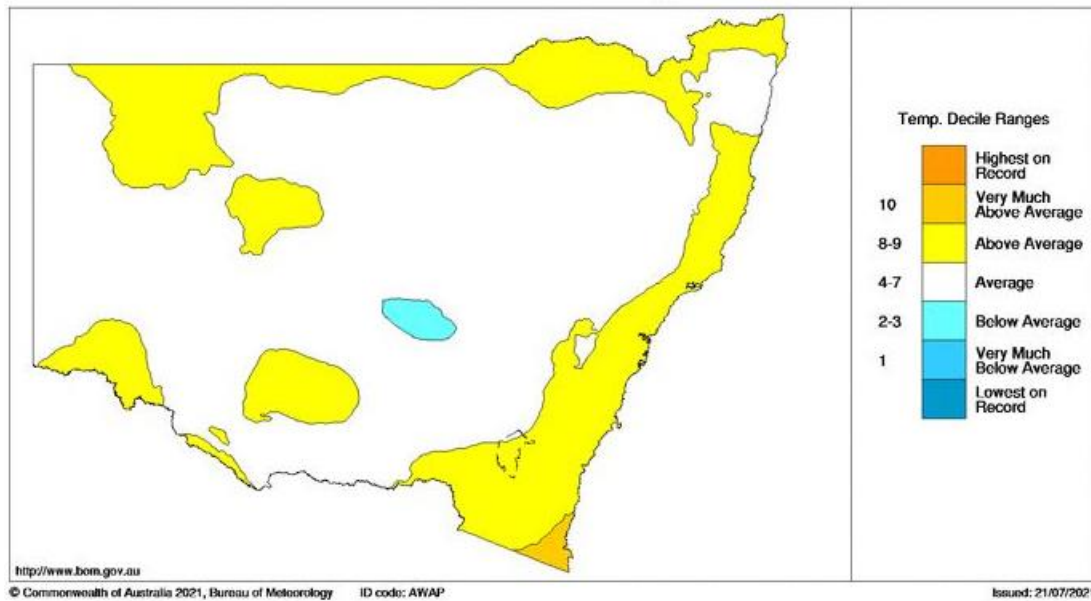
Table 1 –Net Stocked Area 2020

Plantation	Net Stocked Area in 2020 (ha)
Wandalla	49.6 ha

Growing Season

Bathurst Management Area experienced a mild year with only average temperatures (Figure 1) and annual rainfall very much above average (Figure 2). Rockley received 831mm from July 2020 to June 2021 against an average of 697mm (refer Annexure A). Rainfall was well distributed across the growing season.

Mean Temperature Deciles 1 July 2020 to 30 June 2021
 Distribution Based on Gridded Data
 Australian Bureau of Meteorology



Product Code: IDCKAT55Q0

FIGURE 1 – NEW SOUTH WALES MEAN TEMPERATURE DECILES – 2020-2021

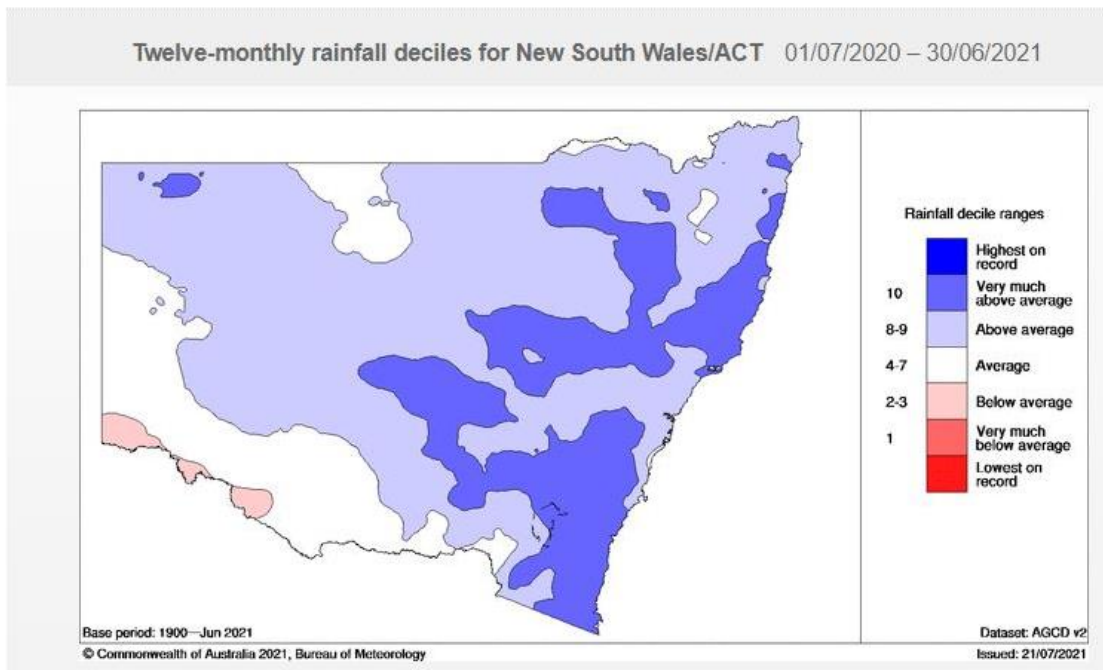


FIGURE 2 -NEW SOUTH WALES RAINFALL DEFICIENCIES – 2020-2021

Stand Condition

The stand condition remains good following an inspection in August 2021 with no significant changes since the last reporting period. Tree health, survival and growth

are generally good following above average rainfall during the year (Figure 3). No further drought mortality was observed during the aerial health survey or on-site inspections.

Trees are exhibiting some of the characteristics common to first rotation sites established on agricultural land such as large branching and sweep/wobble in some stems.

Roadside pruning and vegetation clearing operations were undertaken to improve vehicle access (Figure 4).



FIGURE 3: AUGUST 2021 – SHOWING GOOD GROWTH, TREE HEALTH AND SURVIVAL



FIGURE 4: AUGUST 2020 – ACCESS HAS BEEN IMPROVED FOLLOWING ROADSIDE PRUNING.

Biosecurity & Forest Health

Aerial and ground-based forest health surveillance was undertaken in May 2021 (Figure 6). Surveillance and management inspections observed low levels of yellowing likely caused by *Cyclaneusma* needle cast or Monterey Pine aphids (final report pending). The levels of infestation will have minimal impact on tree growth and are not at a level where any additional treatment is required.

Common plantation pests such as the Monterey pine aphid (*Essigella californica*) and Sirex wood wasp (*Sirex noctilio*) are effectively managed in BMA plantations using well established monitoring and biological control programs.

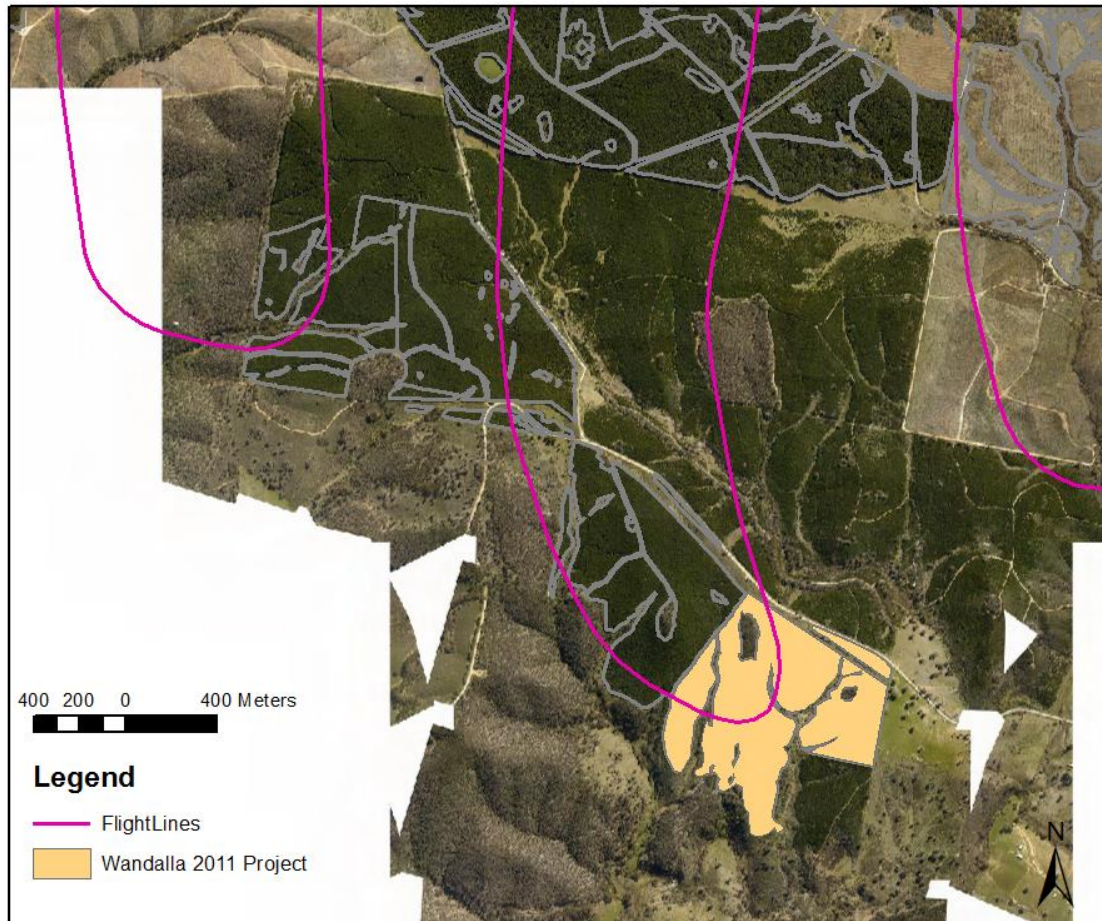


FIGURE 6: MAY 2021 HEALTH SURVEY FLIGHT PATH BATHURST MANAGEMENT AREA

Fire Management

No fire incidents occurred within the Wandalla plantations.

Vegetation removal and roadside pruning were undertaken to improve vehicle access.

Other Management Issues

Nil

Report Prepared by

A handwritten signature in black ink, appearing to read 'RR', followed by a horizontal line extending to the right.

Russell Riepsamen

PLANNING MANAGER

NORTHERN SOFTWOODS

FORESTRY CORPORATION OF NSW

Annexure A

Monthly Rainfall Statistics (Rockley)

