

AGRIWEALTH PTY LIMITED

2010 TIMBER PROJECT



2020-2021 ANNUAL REPORT

Context

This annual report has been prepared in accordance with Schedule 1 Part 3(h) of the Forestry Management Contract between AgriWealth Pty Limited and the Forestry Commission of New South Wales (now known as the Forestry Corporation of NSW(FCNSW)) for the 2010 Timber Project.

Background

The 2010 Timber Project is located at Wandalla, 40 kilometres south west of Oberon within the Bathurst Management Area (BMA) of Northern Softwoods Region of FCNSW. The project comprises 88.5 hectares of plantation planted in winter 2011.

Plantation Area

A review of the net stocked area of plantation within the Project was undertaken in 2018 (Table 1). This plantation area review captured the natural attrition and mortality that has occurred since planation establishment.

Table 1 –Net Stocked Area 2018

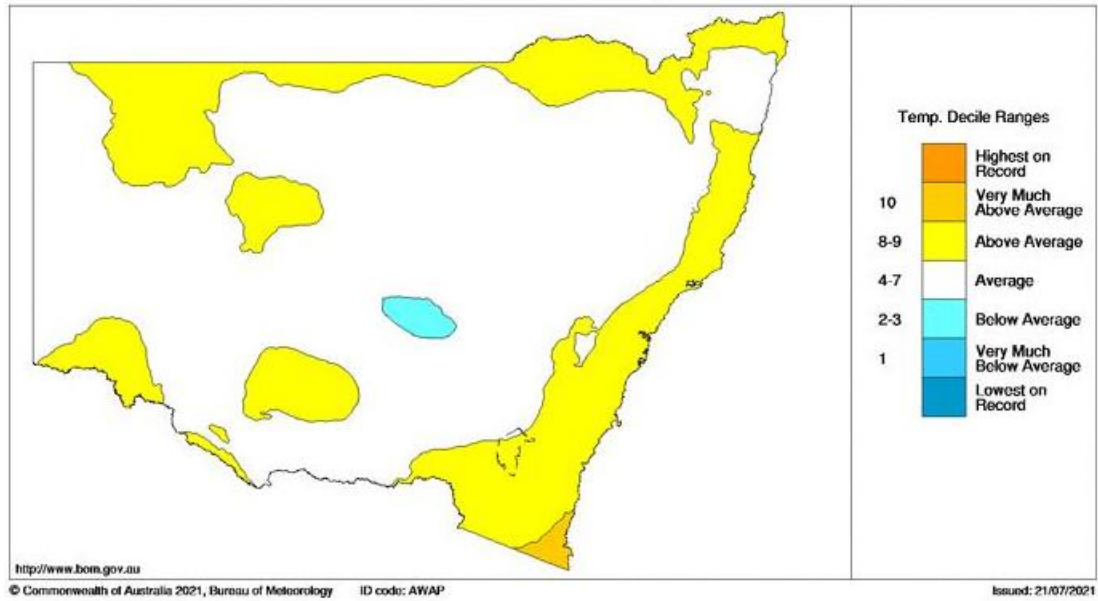
Plantation	Net Stocked Area in 2018 (ha)
Wandalla	88.04ha

The updated net stocked area which includes Forestry Right Land and Adjoining Land constitutes a change of minus 0.5% from planting.

Growing Season

Bathurst Management Area experienced a mild year with only average temperatures (Figure 1) and annual rainfall very much above average (Figure 2). Rockley received 831mm from July 2020 to June 2021 against an average of 697mm (refer Annexure A). Rainfall was well distributed across the growing season.

Mean Temperature Deciles 1 July 2020 to 30 June 2021
 Distribution Based on Gridded Data
 Australian Bureau of Meteorology



Product Code: IDCKAT55Q0

FIGURE 1 – NEW SOUTH WALES MEAN TEMPERATURE DECILES – 2020-2021

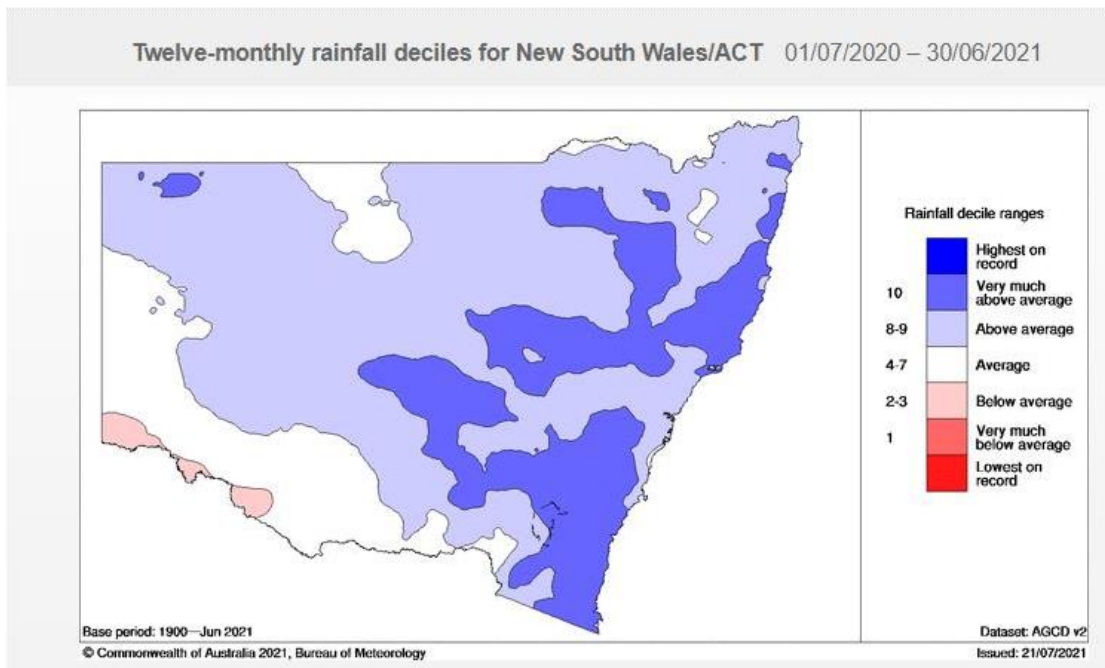


FIGURE 2 -NEW SOUTH WALES RAINFALL DEFICIENCIES – 2020-2021

Stand condition

The stand remains in good health with no significant changes since the last reporting period. An inspection in August 2021 found the form to be generally satisfactory but exhibiting some of the characteristics of a first rotation ex-pasture stand, such as larger branching and some stem sweep (Figure 3). Stocking is consistent with good survival (Figure 4). Trees are growing well on the productive parts of the site, with reduced growth observed on ridge tops and lower fertility areas. Roadside clearing and pruning have improved stand access (Figure 5).



FIGURE 3: AUGUST 2021 – TREES EXHIBITING FIRST ROTATION STEM FORM AND BRANCHING.



FIGURE 4: AUGUST 2021 – GOOD TREE HEALTH AND GROWTH.



FIGURE 5: AUGUST 2021 – IMPROVED STAND ACCESS FOLLOWING ROADSIDE PRUNING AND VEGETATION CLEARING.

Forest Health

Aerial and ground-based forest health surveillance was undertaken in May 2021 (Figure 6). Surveillance and management inspections observed low levels of yellowing likely caused by *Cyclaneusma* needle cast or Monterey Pine aphids (final report pending). The levels of infestation will have minimal impact on tree growth and are not at a level where any additional treatment is required.

Common plantation pests such as the Monterey pine aphid (*Essigella californica*) and Sirex wood wasp (*Sirex noctilio*) are effectively managed in BMA plantations using well established monitoring and biological control programs.

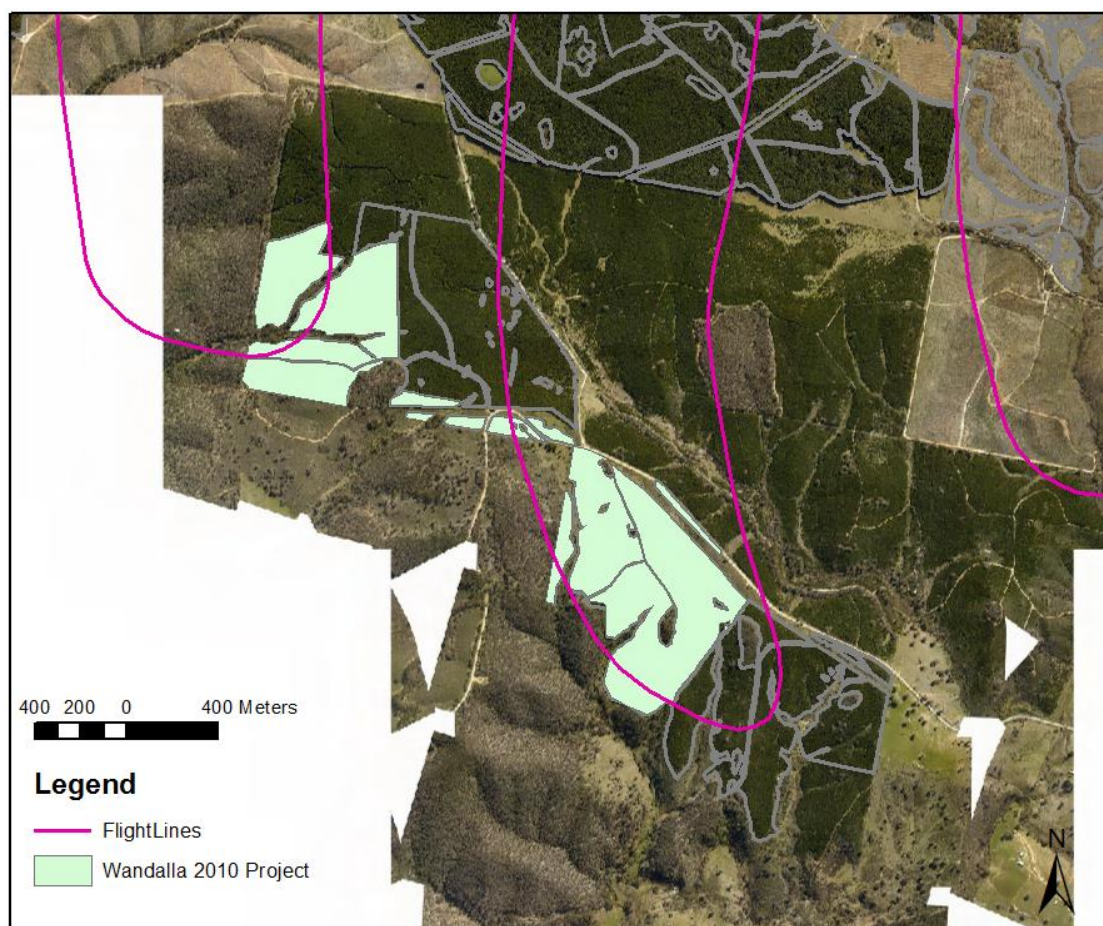


FIGURE 6: MAY 2021 HEALTH SURVEY FLIGHT PATH BATHURST MANAGEMENT AREA

Fire Incidents

No fire incidents occurred within or near the Wandalla plantations.

Roadside pruning and vegetation were undertaken during the year to improve plantation vehicle access.

Other Management Issues

Nil

Report Prepared by



Russell Riepsamen

PLANNING MANAGER

NORTHERN SOFTWOODS

FORESTRY CORPORATION OF NSW

Annexure A

Monthly Rainfall Statistics (Rockley)

