

AGRIWEALTH PTY LIMITED

**2011 SOFTWOOD TIMBER
PROJECT
&
2011 TIMBER PROJECT**



2019-2020 ANNUAL REPORT

Legal Context

This annual report has been prepared in accordance with Schedule 1 Part 3(h) of the Forestry Management Contract between AgriWealth Pty Limited and the Forestry Commission of New South Wales (now trading as the Forestry Corporation of NSW (FCNSW)) for the 2011 Timber Project.

Background

The 2011 Project is located at Wandalla, 40 kilometres south west of Oberon within the Bathurst Management Area (BMA) of the FCNSW Northern Softwoods Region. The project comprises 50 hectares of plantation that was established in 2012. Planting occurred in winter using GF19 containerised stock.

Plantation Area

A review of the net stocked area of plantation within the Project was undertaken in August of 2020 (Table 1) using recently acquired aerial imagery. This plantation area review has captured some mortality adjacent to a drainage line that has occurred since plantation establishment. Improved mapping data has also allowed for some additional small adjustments to the NSA.

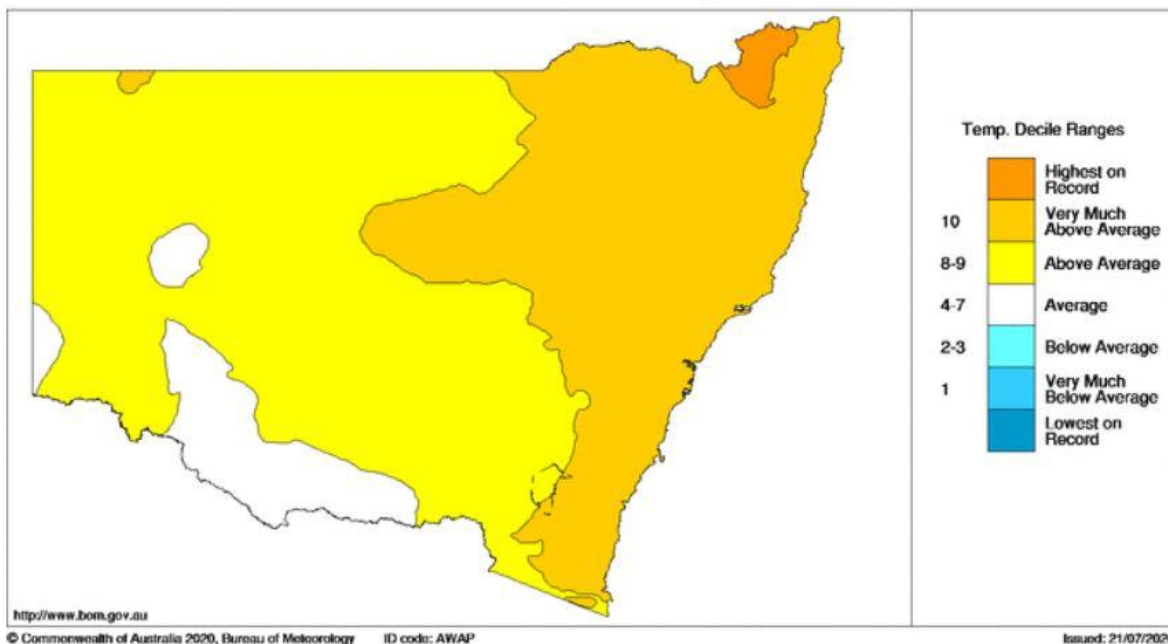
Table 1 –Net Stocked Area 2020

Plantation	Net Stocked Area in 2020 (ha)
Wandalla	49.6 ha

Growing Season

The Bathurst area experienced a hot and dry 2019-2020 growing season with temperatures very much above average (Figure 1) and rainfall below average (Figure 2). Rainfall for the reporting period was 570mm (July 2019 – June 2020, Rockley NSW) compared to an average of 697mm (Annexure A). The rainfall deficits were most significant between July and January. Rainfall from February to April was above average.

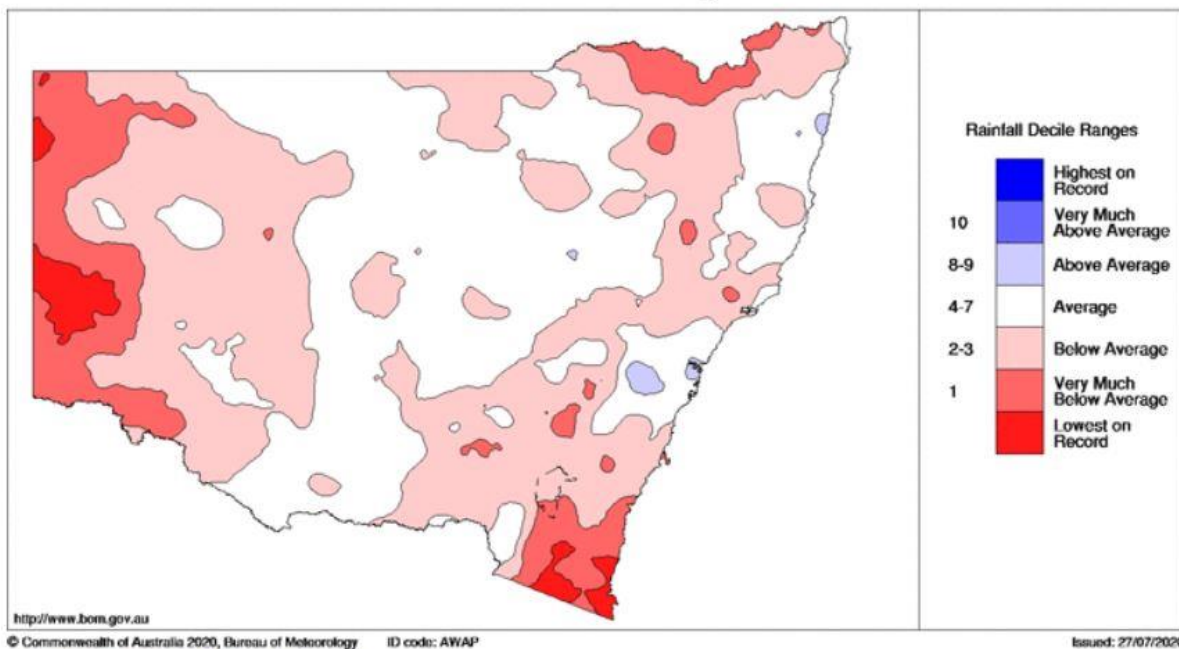
Mean Temperature Deciles 1 July 2019 to 30 June 2020
 Distribution Based on Gridded Data
 Australian Bureau of Meteorology



Product Code: IDCKAT55Q0

FIGURE 1 – NEW SOUTH WALES MEAN TEMPERATURE DECILES – 2019-2020

New South Wales Rainfall Deciles 1 July 2019 to 30 June 2020
 Distribution Based on Gridded Data
 Australian Bureau of Meteorology



Product Code: IDCKAR55Q0

FIGURE 2 -NEW SOUTH WALES RAINFALL DEFICIENCIES – 2019-2020

Stand Condition

The stand condition continues to be good following an inspection in August 2020 which has showed no significant changes since the last reporting period. Boron and weed control treatments remain effective. Tree health and growth are generally good although some low levels of drought related mortality were observed (see discussion on Forest Health).

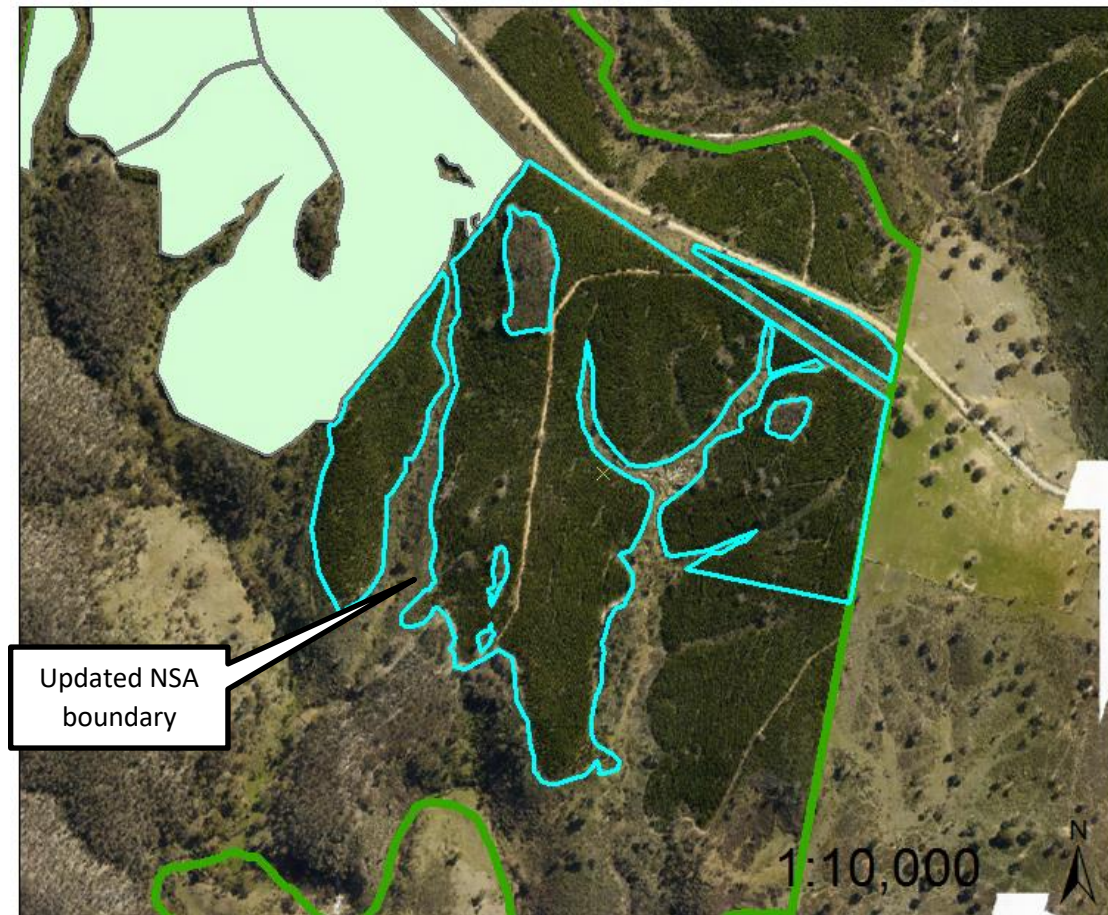


FIGURE 3: AUGUST 2020 – SHOWING GOOD STOCKING ACROSS THE SITE AND THE ADJUSTED NSA BOUNDARY REFLECTING MORTALITY ALONG THE MAJOR DRAINAGE LINE.



FIGURE 4: AUGUST 2020 – STANDS SHOWING GOOD TREE HEALTH AND SATISFACTORY FORM.



FIGURE 5: AUGUST 2020 – CONSISTENT STOCKING AND GOOD SURVIVAL CONTINUES ACROSS THE MAJORITY OF THE SITE.

Biosecurity & Forest Health

Aerial and ground based forest health surveillance was undertaken in July 2020. Figure 6 shows the flight paths taken during the Aerial survey. Some low levels of drought related mortality were observed in the north western corner of the 2012 plantings. This is not totally unexpected given the hot and dry summer and the increased competition developing within the stand. Some mortality is natural in plantations and no management intervention is recommended at this stage. Stands should be considered for an on time thinning at around 14 to 16 years of age to help reduce potential drought related stress.

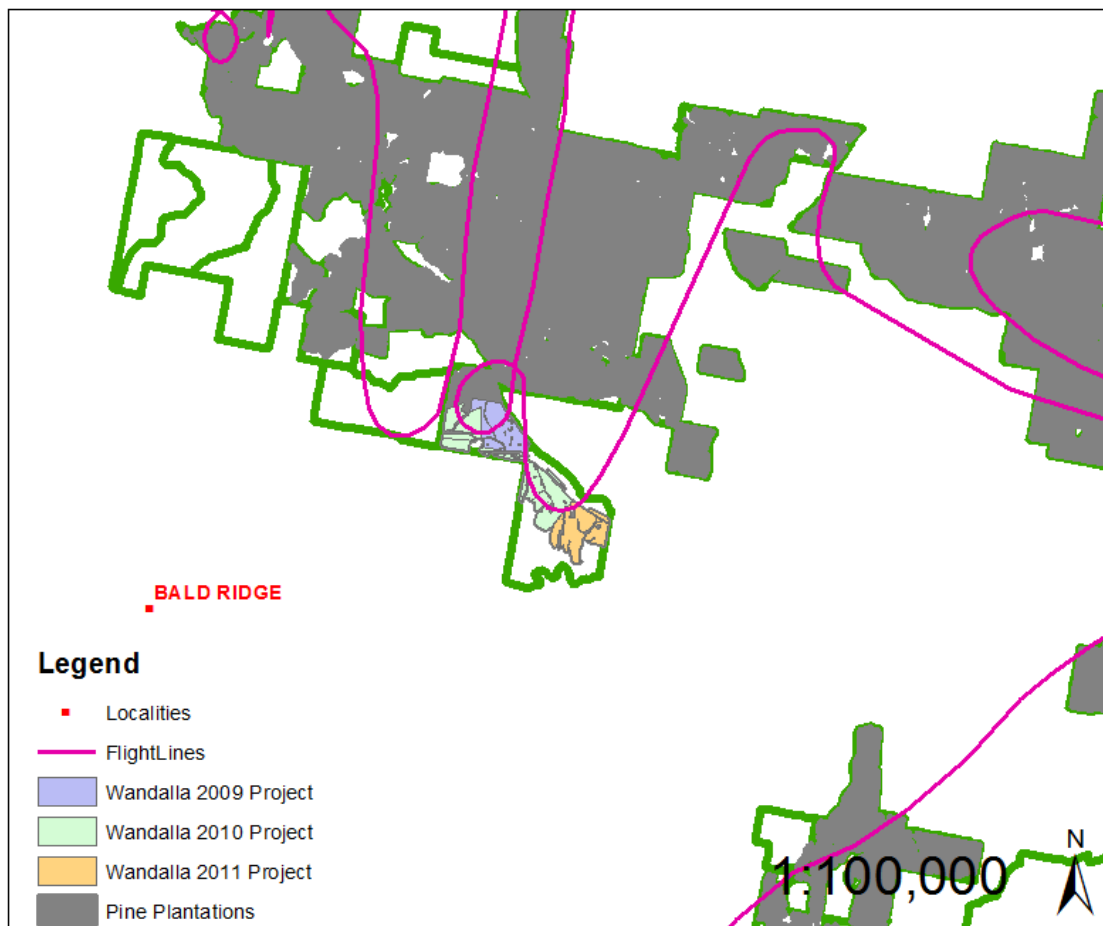


FIGURE 6: 2020 HEALTH SURVEY FLIGHT PATH BATHURST MANAGEMENT AREA

Fire Management

No fire incidents occurred within the Wandalla plantations.

Roadside vegetation has increased along some roads. Weed control and pruning operations are scheduled for Spring to reinstate fire access.

Other Management Issues

Nil

Report Prepared by

A handwritten signature in black ink, appearing to read 'RR', followed by a horizontal line extending to the right.

Russell Riepsamen

PLANNING MANAGER

NORTHERN SOFTWOODS

FORESTRY CORPORATION OF NSW

Annexure A

Monthly Rainfall Statistics (Rockley)

