

AGRIWEALTH PTY LIMITED

30 JUNE 2007 RADIATA PINE PROJECT



2017-2018 ANNUAL REPORT  
(PART A)

## Legal Context

This annual report complies with Schedule 1 Part 4(h) of the Forestry Management Contract between AgriWealth Pty Limited and the Forestry Commission of New South Wales (now known as the Forestry Corporation of NSW (FCNSW)) for the AgriWealth 30<sup>th</sup> June 2007 Radiata Pine Project.

At the request of AgriWealth two reports have been prepared for this Project. This report (Part A) covers 580 hectares of the 1,410 hectare Project.

## Background

This report covers *Pinus radiata* plantation established on seven properties located around the Tumut and Tumbarumba regions. These areas are within the Tumut Management Area (TMA) of the FCNSW Snowy Region. Planting of this project was completed in 2008.

## Plantation Area

A review of the net stocked area of each plantation block was undertaken in mid-2015 (Table 1). The review captured mortality and natural attrition that has occurred since plantation establishment.

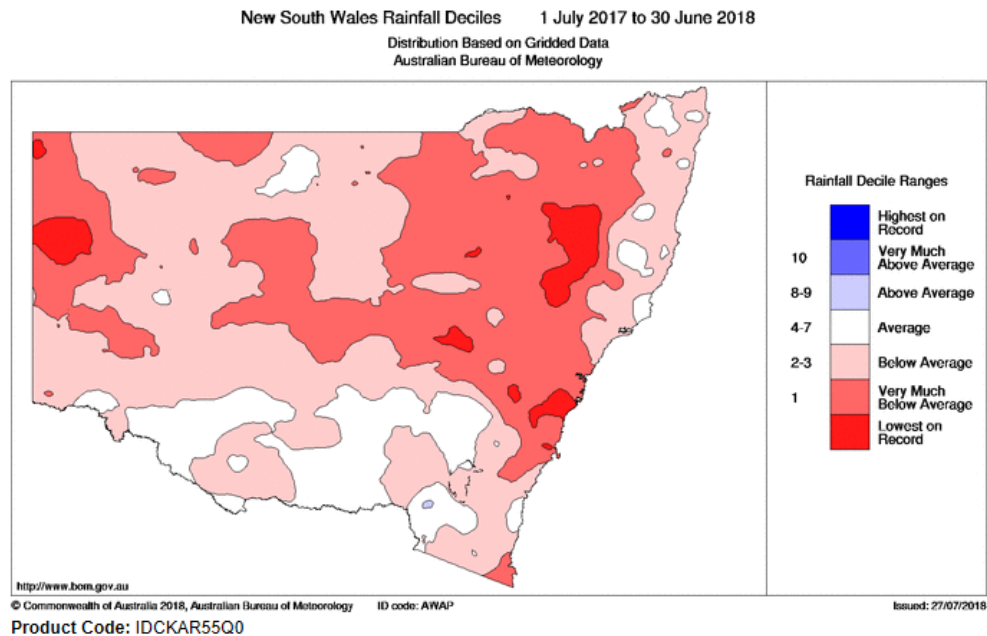
**Table 1 –Net Stocked Area 2015**

Plantation	Net Stocked Area in 2015 (ha)
Tinonee	294.8
Walkers	31.8
McLennan	26.6
Russell	29.8
E&P1 (Valley)	73.0
E&P2 (Valley)	105.0
Hansens 3	19.7
<b>Total</b>	<b>580.6</b>

The updated net stocked area which includes Forestry Right Land and Adjoining Land constitutes a change of minus 2.2% from planting.

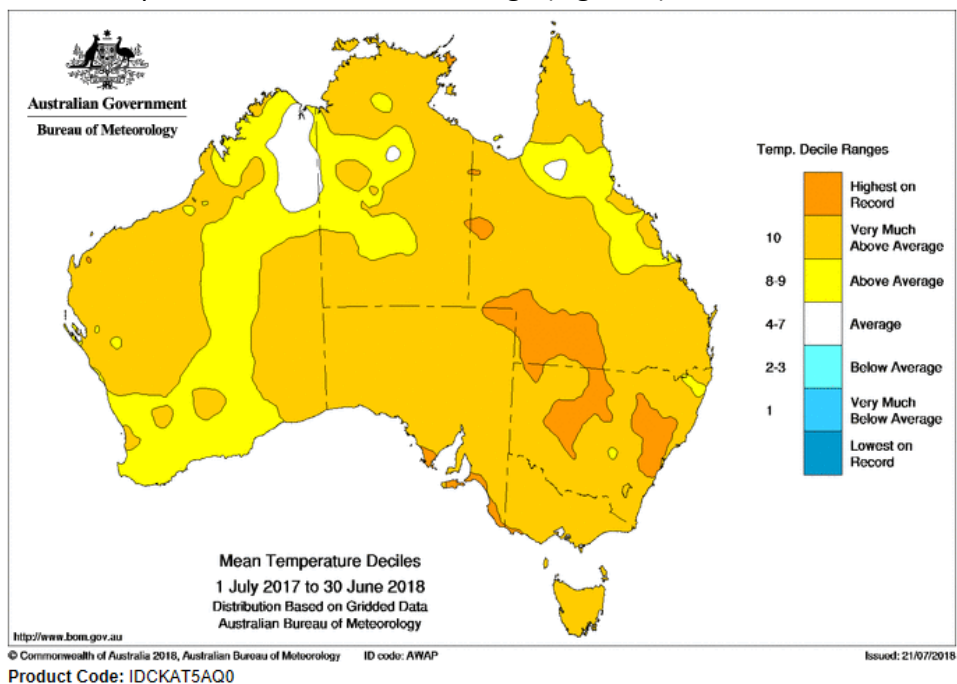
## Growing Season

Rainfall in the Tumut Management Area was below average during the reporting period (Figure 1) with average rainfall in the latter half of 2017 and a very dry autumn in 2018. Total rainfall at Tumbarumba for 2017-18 was 797 mm compared to the long-term average of 976 mm (refer Annexure A).



**Figure 1 – New South Wales Rainfall Deciles – 2017-2018**

Mean temperatures were above average (Figure 2).



**Figure 2 – New South Wales Temperature Deciles – 2017-2018**

## Stand Condition

### Tinonee

Consistent with recent reports, the overall tree growth and condition in this plantation continues to be very good with a satisfactory stocking (Figure 3). Tree form is reasonable for the site with very good tree height growth on the lower and mid slopes.

The forest health survey has identified low levels of drought death of trees, 1 to 5 %, on the upper slope areas, like last year. This is not uncommon in forests in this general locality and FCNSW intends to consider this issue in scheduling 1<sup>st</sup> thinning operations, proposed at approximately age 13. The reduction in tree stocking following thinning, reduces drought stress on individual trees and reduces the risk of more significant tree loss. Additionally, thinning promotes growth on the better trees, allowing them to grow on to produce a higher proportion of sawlogs at final harvest.

No other significant issues are currently evident in this plantation.



**Figure 3: Tinonee July 2018. Continuing to exhibit good growth and tree health, with tree form generally reasonable.**



### Walkers, McLennan, Russell and E&P2

These plantations have generally continued to grow well, with good tree health and improving tree height growth. As previously reported, here are some lower stocked areas in drainage depressions and lower slopes which will affect future wood yields. E&P2 is the best performing plantation of this group (Figure 4), and the Russell plantation exhibits significantly slower height growth (Figure 5).



**Figure 4: E&P 2 2008 Age class – July 2018 – plantation in good condition**



**Figure 5: Russell 2008 Age class – July 2018**

Walkers (Figure 6) and McLennan (Figure 7) are growing less vigorously and have more significant areas of lower stocking.



**Figure 6: Walkers 2008AC – mid ground – July 2018.**



**Figure 7: McLennan 2008AC – July 2018 – healthy trees with moderate growth.**

No other significant issues are evident in these plantations.



## E&P1

Consistent with the most recent reports for this plantation, E&P1 generally has low stocking and poor tree form, however growth and plantation condition during the year has been reasonable and there is a trend to improvement in the trees. Where tree stocking and growth is reasonable, trees are continuing to improve in vigour and form.



**Figure 8: E&P1 2008AC – July 2018 – trees generally healthy but poor form and stocking in some areas.**

## Hansen

Consistent with previous reports, this plantation is continuing to perform well with good height growth and tree form. (Figure 9). This plantation has higher levels of Dothistoma needle blight than other plantations in the project, with low to moderate level being observed around the creeks and lower slopes. In some specific areas there has been reduced tree diameter growth due to ongoing reduced crown health.

No other significant issues have been observed.

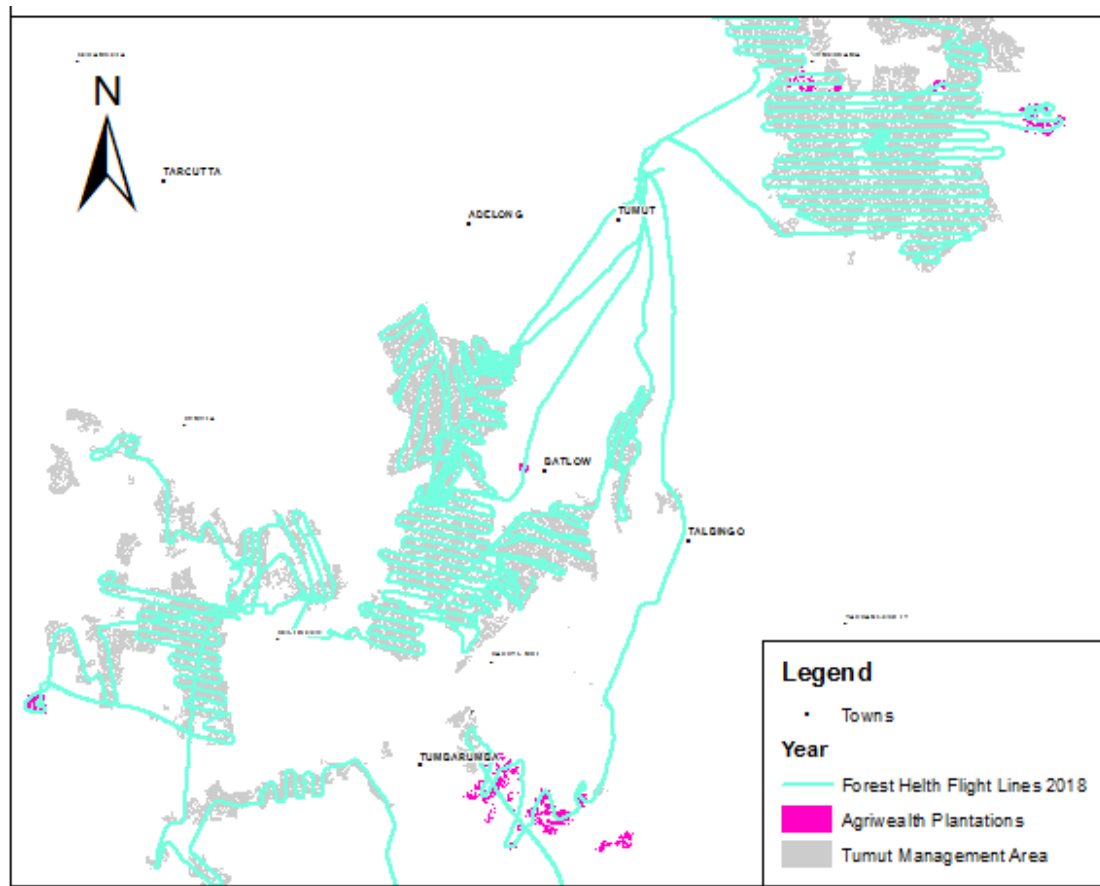


**Figure 9: Hansen 2008AC – plantation growing well – July 2018**



## Forest Health Surveys

Aerial forest health surveillance was undertaken in late June 2018 (Figure 10) and followed up with ground inspections. Preliminary reporting indicates no significant forest health issues are presenting in the 2007 Project properties.



**Figure 10: Aerial forest health surveillance flight path over Tumut Management Area – June 2018.**

## Biosecurity & Forest Health

Pest animals are present on all properties, but are not causing any significant damage due to the size and height of the trees. No other significant issues were identified.

*Dothistroma* needle blight is present on some properties in low levels, except for Hansen's where levels are higher as noted above. Infestation levels are similar to other plantation areas in the region. Infection levels are generally low following seasonally dry conditions during late summer and early autumn. Treatment of *Dothistroma* is not recommended for the low level of infection currently observed.

Sirex wood wasp is present throughout plantations in Southern Australia. FCNSW's implements a routine control program to release and monitor biological control agents across the Tumut Management area.

## Fire Incidents

No other fire incidents have occurred within or close to any of the 30 June 2007 Radiata Pine Project plantations.

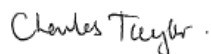
## Summary of Activities Planned for 2018/2019

- Aerial forest health surveillance and monitoring
- Maintenance of roads and tracks
- Continue grazing at Tinonee to reduce excessive grass growth and associated fire hazard.

## Other Management Issues

Nil

Report Prepared by



**Charlie Taylor**

STEWARDSHIP AND FIRE MANAGER

SNOWY REGION

FORESTRY CORPORATION OF NSW

### Monthly Rainfall Statistics F17

