

AGRIWEALTH PTY LIMITED

**2011 SOFTWOOD TIMBER  
PROJECT  
&  
2011 TIMBER PROJECT**



**2017-2018 ANNUAL REPORT**

## Legal Context

This annual report has been prepared in accordance with Schedule 1 Part 3(h) of the Forestry Management Contract between AgriWealth Pty Limited and the Forestry Commission of New South Wales (now trading as the Forestry Corporation of NSW (FCNSW)) for the 2011 Timber Project.

## Background

The 2011 Project is located at Wandalla, 40 kilometres south west of Oberon within the Bathurst Management Area (BMA) of the FCNSW Northern Softwoods region. The project comprises 50 hectares of plantation that was established in 2012. Planting occurred in winter using GF19 containerised stock. Being the fourth planting program at Wandalla the plantation is referred to as Stage 4.

## Growing Season

The Bathurst Management Area experienced a long, extremely warm 2017-2018 growing season (Figure 2). Annual rainfall was 30% below annual average (Figure 1, Annexe A). Despite the well below average annual rainfall, the summer growth period was within range of seasonal average (Annexe A).

New South Wales Rainfall Deciles 1 July 2017 to 30 June 2018

Distribution Based on Gridded Data  
Australian Bureau of Meteorology

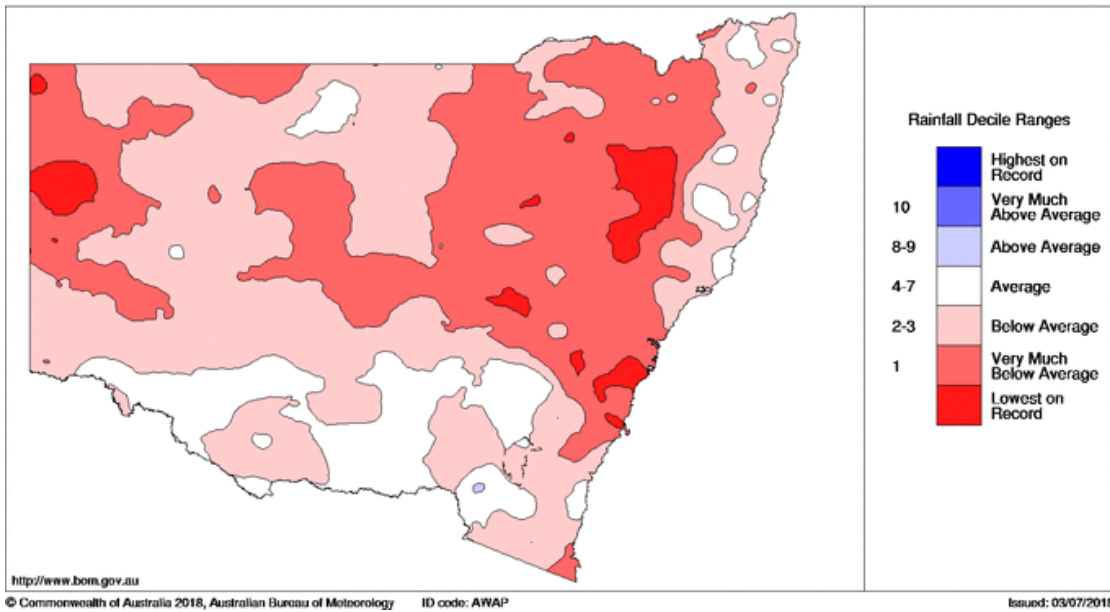


Figure 1 – New South Wales Rainfall Deciles – 2017-2018

Mean Temperature Deciles 1 July 2017 to 30 June 2018

Distribution Based on Gridded Data  
Australian Bureau of Meteorology

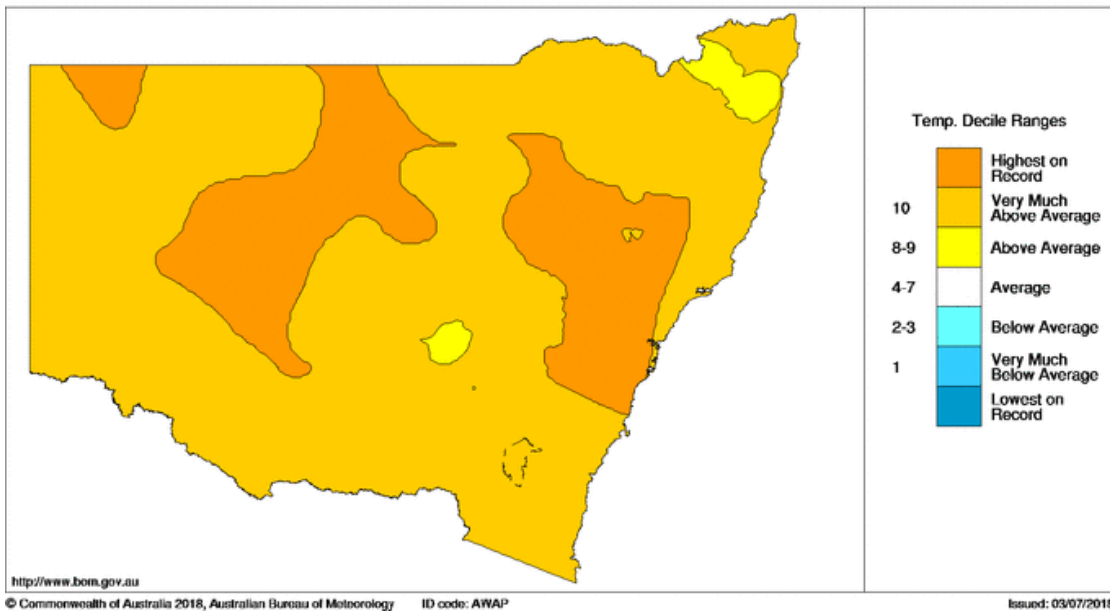
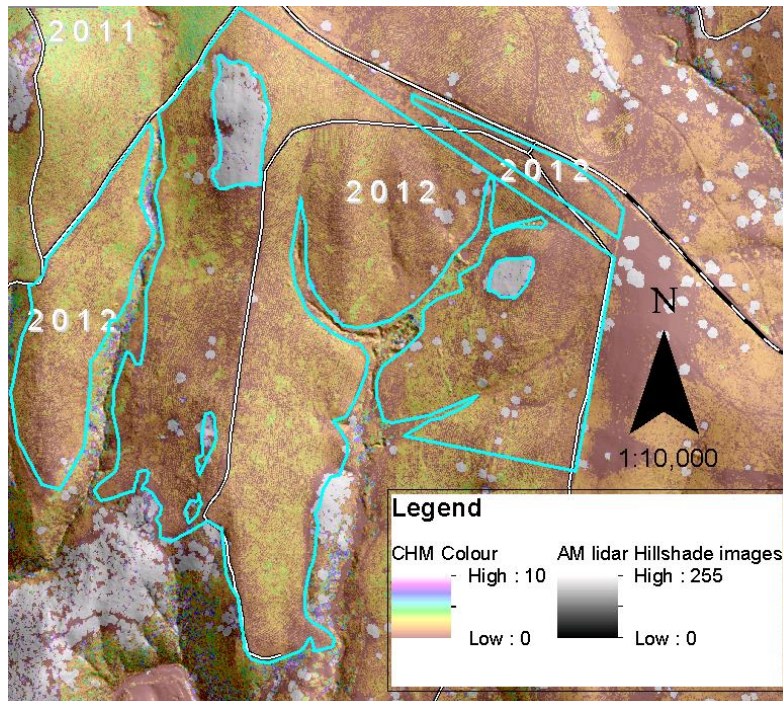


Figure 2: NSW mean temperature deciles - 2017-2018

## Stand Condition

The condition of the stand has mostly improved following weed and boron treatments carried out in 2015. An Aerial health survey carried out in June 2017 identified a poor survival issue in some low lying areas within the 2012 age class stand.



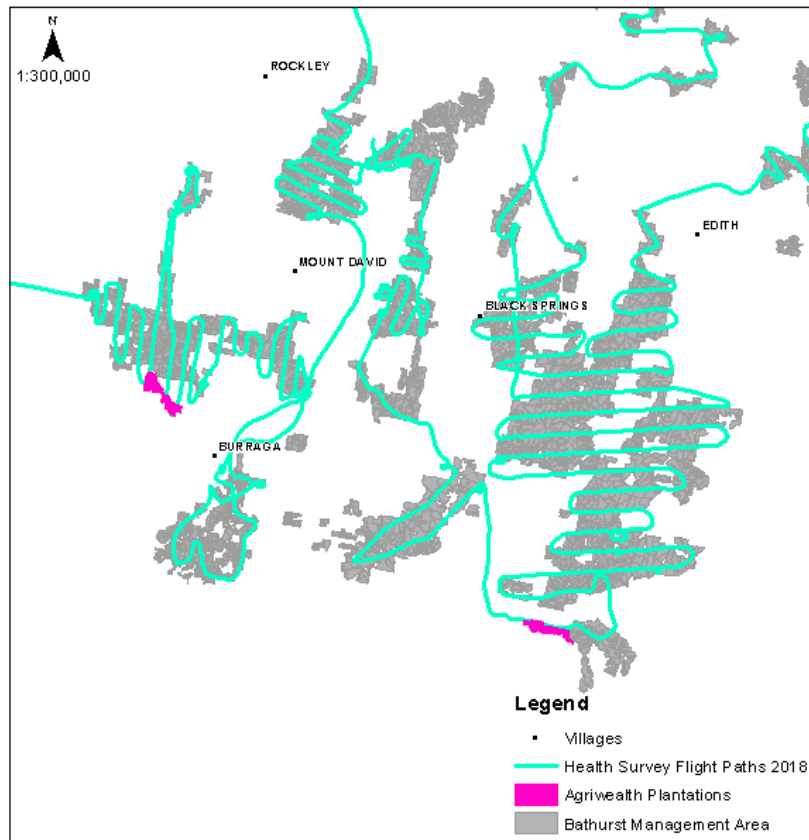
**Figure 4: Wandalla Stage 4 – Processed LiDAR showing Canopy Height Model (CHM) and Hillshade (topographic relief) following LiDAR capture program rolled out across most of the BMA in 2015.**



**Figure 5: Wandalla Stage 4 – healthy and uniform (August 2018). No evidence of further Boron deficiency affecting the stand post Boron application in 2016. Long internodes indicate several years of good growth.**

## Biosecurity & Forest Health

Aerial and ground based forest health surveillance was undertaken in July 2018. Figure 6 shows the flight paths taken in the Aerial survey.



**Figure 6: 2018 Health Survey Flight Paths in Bathurst Management Area**



**Figure 7: Wandalla Stage 4 – Access to site reasonable in most conditions through the 2012 Age class (August 2018).**

2011 Softwood Timber Project - 2017-18 Annual Report

## Fire Management

No fire incidents have occurred within or close to the Wandalla plantation.

## Other Management Issues

Nil

Report Prepared by

Sally-Anne Walker

Forest Modeller

Northern Softwoods

### Monthly Rainfall Statistics (Springbank)

