

AGRIWEALTH PTY LIMITED

30 JUNE 2007 RADIATA PINE PROJECT



2016-2017 ANNUAL REPORT
(PART A)

Legal Context

This annual report complies with Schedule 1 Part 4(h) of the Forestry Management Contract between AgriWealth Pty Limited and the Forestry Commission of New South Wales (now known as the Forestry Corporation of NSW (FCNSW)) for the AgriWealth 30th June 2007 Radiata Pine Project.

At the request of AgriWealth two reports have been prepared for this Project. This report (Part A) covers 580 hectares of the 1,410 hectare Project.

Background

This report covers *Pinus radiata* plantation established on seven properties within the Tumut Management Area (TMA) of the FCNSW Snowy Region. Planting of this project was completed in 2008.

Plantation Area

A review of the net stocked area of each plantation block was undertaken in mid-2015 (Table 1). The review captured mortality and natural attrition that has occurred since plantation establishment.

Table 1 –Net Stocked Area 2015

Plantation	Net Stocked Area in 2015 (ha)
Tinonee	294.8
Walkers	31.8
McLennan	26.6
Russell	29.8
E&P1 (Valley)	73.0
E&P2 (Valley)	105.0
Hansens 3	19.7
Total	580.6

The updated net stocked area which includes Forestry Right Land and Adjoining Land constitutes a change of minus 2.2% from planting.
2007 (30 June) Project 2016-17 Annual Report (Part A)

Growing Season

Rainfall in the Tumut management area was above average during the reporting period (Figure 1) with a very wet winter and spring in 2016 and a relatively dry autumn in 2017. Total rainfall at Tumbarumba for 2016-17 was 1025 mm compared to the long-term average of 978 mm (refer Annexure A).

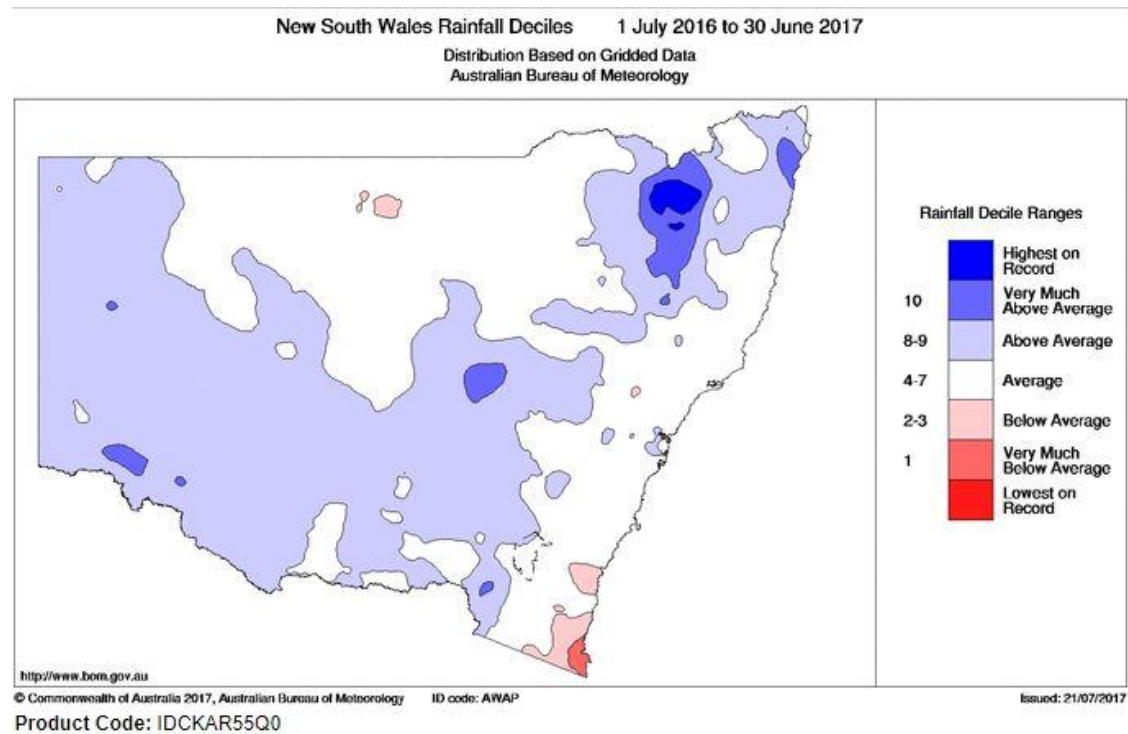


Figure 1 – New South Wales Rainfall Deciles – 2016-2017

Mean temperatures were above average (Figure 2).

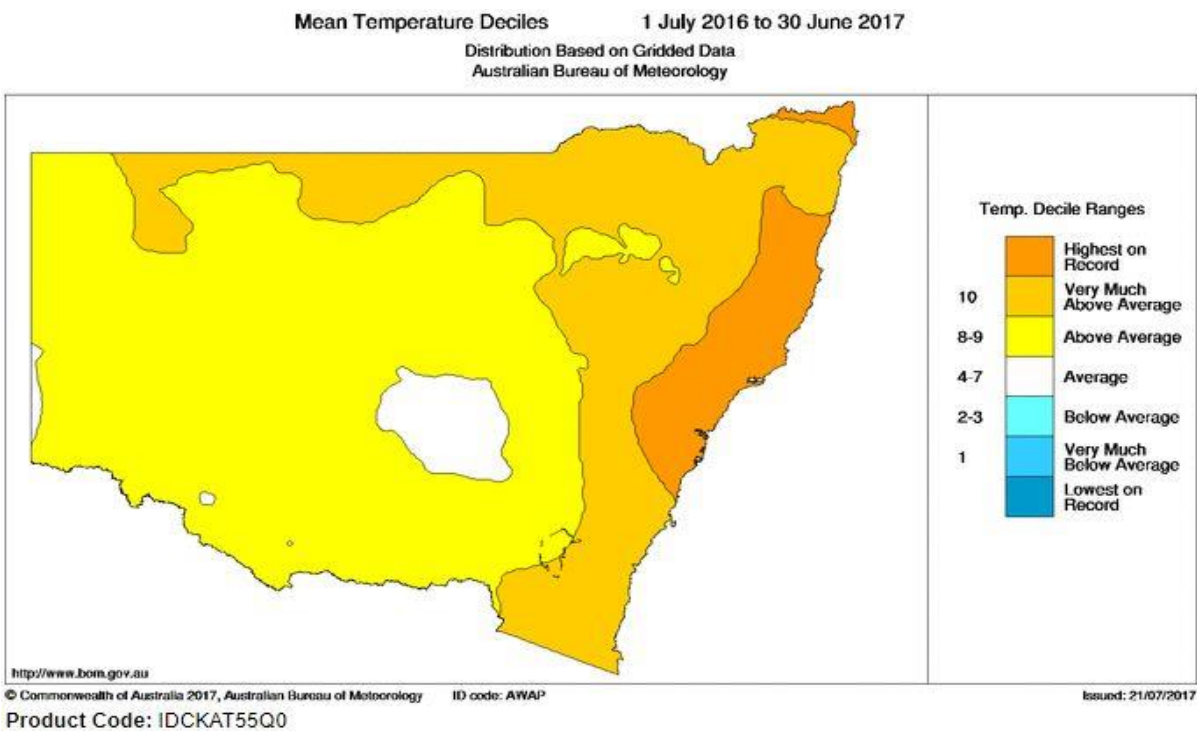


Figure 2 – New South Wales Temperature Deciles – 2016-2017

Stand Condition

Tinonee

The overall tree growth and condition in this plantation continues to be very good with a satisfactory stocking (Figure 3).

The forest health survey has identified low levels of drought death of trees, 1 to 5 %, on the upper slope areas. This is not uncommon in forests in this general locality and FCNSW intends to consider this issue in scheduling 1st thinning operations, proposed at about age 13. The reduction in tree stocking following thinning reduces drought stress on individual trees and reduces the risk of more significant tree loss.

No other significant issues are currently evident in this plantation.



Figure 3: Tinonee August 2016 – continuing good growth and tree health

Walkers, McLennan, Russell and E&P2

As previously reported, these plantations have generally continued to grow well, with good tree health over most the plantations. There are some lower stocked areas in drainage depressions and lower slopes which will affect future wood yields. E&P2 is the best performing plantation of this group (Figure 4).



Figure 4: E&P 2 2008AC – August 2017 – plantation in good condition (background).

Walkers (Figure 5) and McLennan (Figure 6) are growing less vigorously and have more significant areas of lower stocking.



Figure 5: Walkers 2008AC – reasonable trees growth in this area – August 2107



Figure 6: McLennan 2008AC – August 2017 – healthy tress with moderate growth.



Figure 7: Russel 2008AC - August 2017

Russell (Figure 7) continues to exhibit below average growth, lower stocking, less height growth and poorer form trees. Growth during the year has been reasonable for the overall stand condition.

No other significant issues are evident in these plantations.

E&P1

This plantation is generally poor in condition due to low stocking and poor tree form, however growth and plantation condition during the year has been reasonable and a generally improvement in the trees has been observed. Where tree stocking and growth is reasonable, trees are continuing to improve in vigour and form.



Figure 8: E&P1 2008AC – August 2017 – trees generally healthy but poorer form where stocking is lower.

Hansen

The plantation is continuing to perform well with good height growth and tree form. (Figure 9). This plantation has higher levels of Dothistoma needle blight than other plantations in the project, with low to moderate level being observed around the creeks and lower slopes.

No other significant issues have been observed.



Figure 9: Hansen 2008AC – plantation growing well (background) – August 2016

Forest Health Surveys

Aerial forest health surveillance was undertaken in late June 2017 (Figure 10) and followed up with ground inspections. Preliminary reporting indicates no significant forest health issues are presenting in the 2007 Project properties.

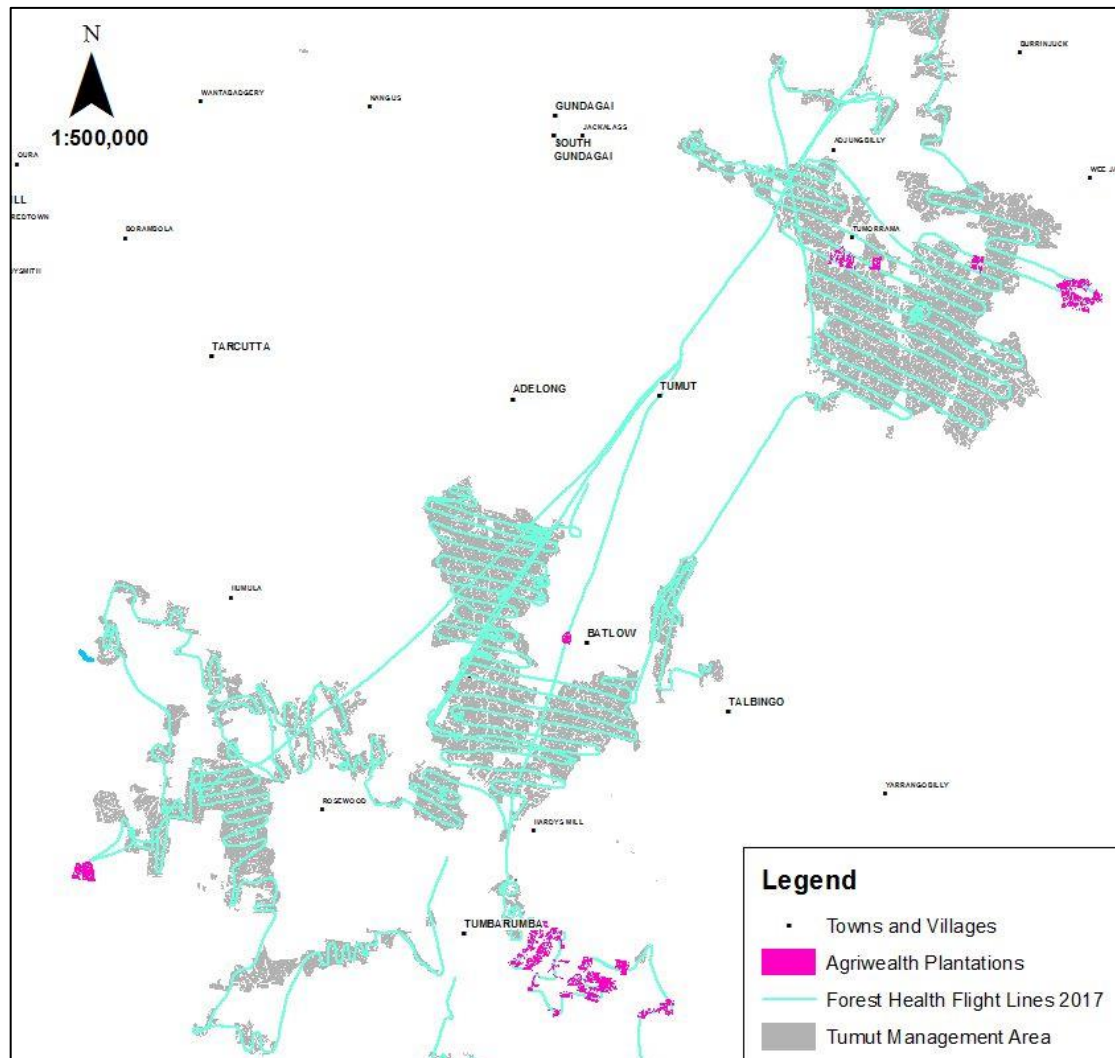


Figure 10: Aerial forest health surveillance flight path over Tumut Management Area – June 2017.

Biosecurity & Forest Health

Pest animals are present on all properties, but are not causing any significant damage due to the size and height of the trees. No other significant issues were identified.

Dothistroma needle blight is present on some properties in low levels, except for Hansen's where levels are higher as noted above. Infestation levels are similar to other plantation areas in the region. Infection levels are generally low following seasonally dry conditions during late summer and early autumn. Treatment of *Dothistroma* is not recommended for the low level of infection currently observed.

Sirex wood wasp is present throughout plantations in Southern Australia. FCNSW's implements a routine control program to release and monitor biological control agents across the Tumut Management area.

Fire Incidents

No other fire incidents have occurred within or close to any of the 30 June 2007 Radiata Pine Project plantations.

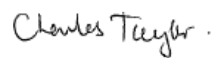
Summary of Activities Planned for 2017/2018

- Aerial forest health surveillance and monitoring
- Maintenance of roads and tracks
- Continue grazing at Tinonee to reduce excessive grass growth and associated fire hazard.

Other Management Issues

Nil

Report Prepared by



Charlie Taylor

STEWARDSHIP AND FIRE MANAGER

SNOWY REGION

For

Bob Germantse

Regional Manager Snowy

2007 (30 June) Project 2016-17 Annual Report (Part A)

Monthly Rainfall Statistics F17

