

# AGRIWEALTH PTY LIMITED

2010 TIMBER PROJECT



## 2016-2017 ANNUAL REPORT

## Context

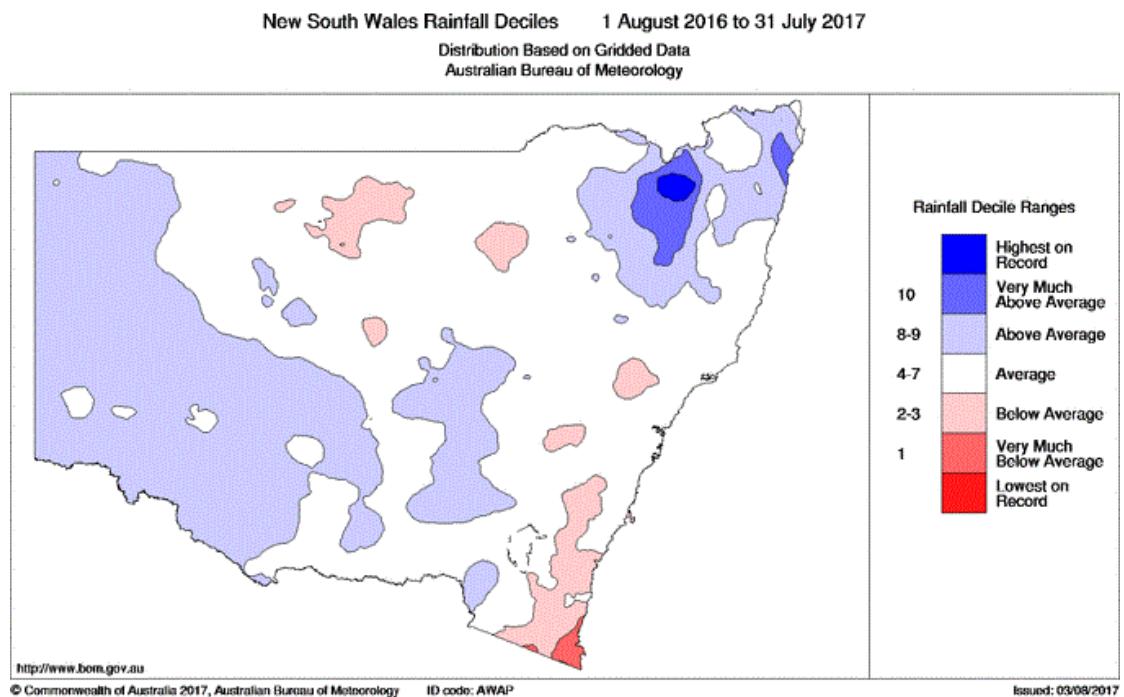
This annual report has been prepared in accordance with Schedule 1 Part 3(h) of the Forestry Management Contract between AgriWealth Pty Limited and the Forestry Commission of New South Wales (now known as the Forestry Corporation of NSW (FCNSW)) for the 2010 Timber Project.

## Background

The 2010 Timber Project is located at Wandalla, 40 kilometres south west of Oberon within the Bathurst Management Area (BMA) of Northern Softwoods region FCNSW. The project comprises 88.5 hectares of plantation planted in winter 2011. Being the third planting program at Wandalla the plantation is referred to as Stage 3.

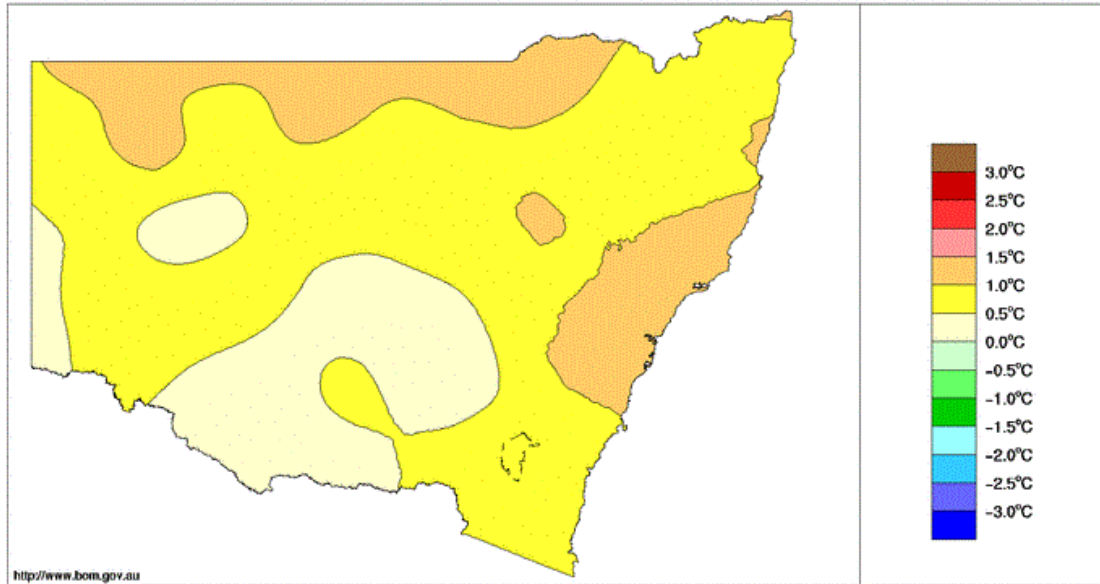
## Growing Season

The Bathurst Management Area experienced a warmer and drier 2016-2017 growing season compared to average. Although the annual rainfall was within the area average, it was not evenly distributed and most of the rain occurred over winter (Figure 1, Annexe A). Summer rainfall was the lowest since 1978 and average and maximum temperatures (Figure 2) were well above average.



**Figure 1: New South Wales Rainfall Deciles – 2016-2017**

Mean Temperature Anomaly (°C) 1 August 2016 to 31 July 2017  
Australian Bureau of Meteorology

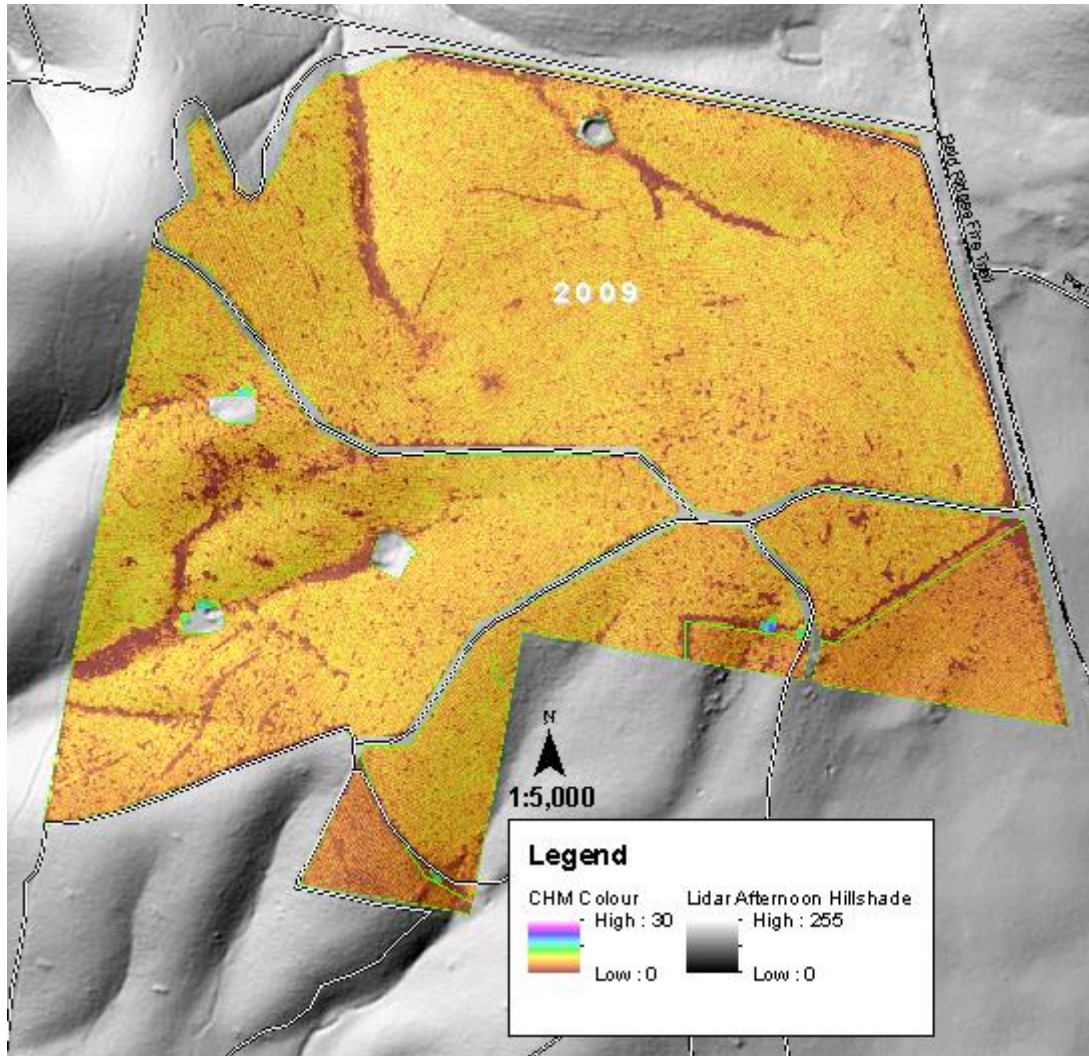


All temperature anomalies are calculated with respect to the average over the 1961 to 1990 reference period.

**Figure 2: New South Wales Mean Temperature Deciles – 2016-2017**

## Stand condition

The condition of the stand continues to be very good. Wandalla was inspected in July 2017 and appears to have good survival, is well stocked, healthy, vigorous and with reasonable form (see Figures 3, 4 and 5 below).



**Figure 3 Wandalla stage 3 - Processed LiDAR showing Canopy Height Model (CHM) and Hillshade (topographic relief) following a LiDAR capture program rolled out across the BMA in 2015.**



**Figure 4: Wandalla Stage 3. Five year old trees – reasonable form and vigour (August 2017).**



**Figure 5: Wandalla Stage 3. Six year old trees – the crop continues to maintain good health and form. Long internodes demonstrate very good vigour (August 2017).**

## Forest Health

Aerial and ground based forest health surveillance was undertaken in June 2017 (See Figure 6). Preliminary reporting indicates no significant forest health issues are presenting in the 2010 Radiata Pine Project.

Recent management inspections at Wandalla did not detect any forest health or nutritional issues.



**Figure 6: 2017 Health Survey Flight Path Bathurst Management Area**

## Fire Incidents

No fire incidents have occurred within or close to any of the plantations.

Fire management access through the Wandalla forest is still reasonable with some roadside clearing scheduled over the next year to ensure ongoing fire access.

## Other Management Issues

Nil

Report Prepared by

**Sally-Anne Walker**

FOREST MODELLER

NORTHERN SOFTWOODS

### Monthly Rainfall Statistics

