

AGRIWEALTH PTY LIMITED

**31 MARCH 2007 RADIATA
PINE PROJECT**



2016-2017 ANNUAL REPORT

Legal Context

This annual report complies with Schedule 1 Part 4(h) of the Forestry Management Contract between AgriWealth Pty Limited and the Forestry Commission of New South Wales (now known as the Forestry Corporation of NSW(FCNSW)) for the AgriWealth 31 March 2007 Radiata Pine Project.

Background

The 31 March 2007 Radiata Pine Project is located 3 kilometres west of Batlow on the property known as Hansen. It is managed as part of the FCNSW Tumut Management Area (TMA) within the Snowy Region.

Overview

The plantation continues to grow well with above average tree form.

Plantation Area

A review of the net stocked area of plantation within the Project was undertaken in June 2015 (Table 1). This plantation area review captured the natural attrition and mortality that has occurred since planation establishment.

Table 1 –Net Stocked Area 2015

Plantation	Net Stocked Area in 2015 (ha)
Hansen 2007 (31 March) Project	21ha

The updated net stocked area which includes Forestry Right Land and Adjoining Land constitutes a change of minus 9.1% from planting.

Growing Season

Rainfall in the Tumut Management Area was above average during the reporting period (Figure 1) with a very wet winter and spring in 2016 and a relatively dry autumn in 2107. Total rainfall at Tumbarumba for 2016-17 was 1025 mm compared to the long-term average of 978 mm.

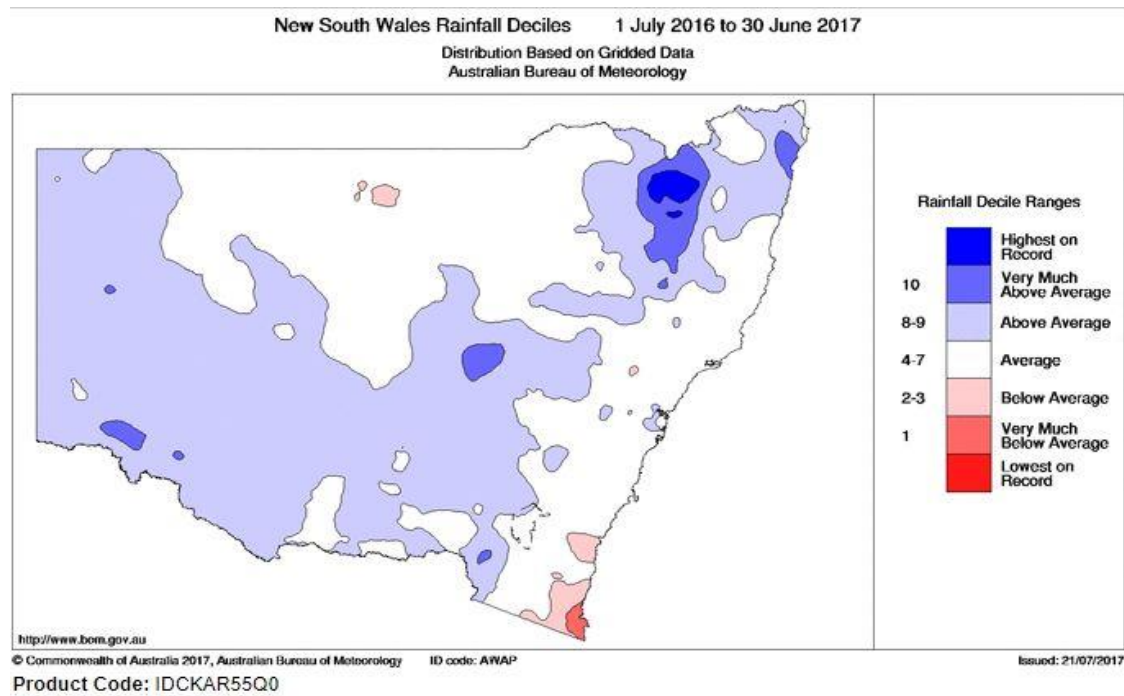


Figure 1 – New South Wales Rainfall Deciles – 2016-2017

Mean temperatures were above average (Figure 2).

Mean Temperature Deciles 1 July 2016 to 30 June 2017
Distribution Based on Gridded Data
Australian Bureau of Meteorology

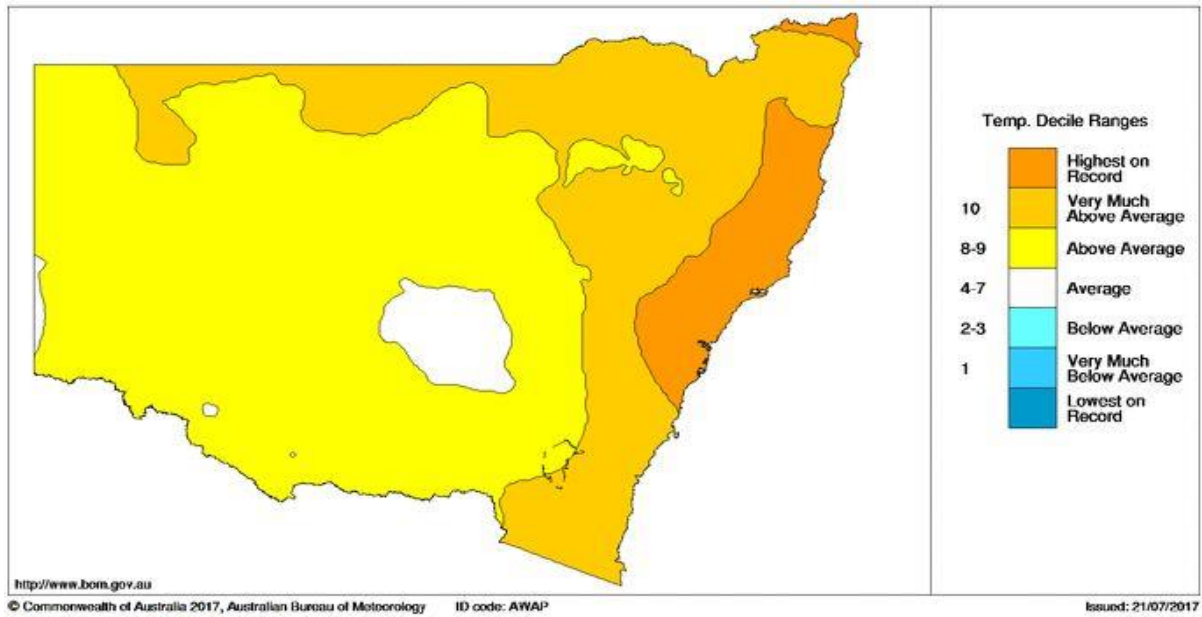


FIGURE 2 – NEW SOUTH WALES TEMPERATURE DECILES – 2016-2017

Stand Condition

The plantation condition and performance is continuing to be satisfactory, and displays very good tree form. As previously noted, the isolated wattle and eucalypt regrowth is not considered to be having a significant effect on plantation growth.



Figure 3: Hansen 2007 Age Class August 2017

Biosecurity & Forest Health

Aerial forest health surveillance was undertaken in late June 2017 (Figure 4) and followed up with ground inspections. Preliminary reporting indicates no significant forest health issues are presenting in this Project.

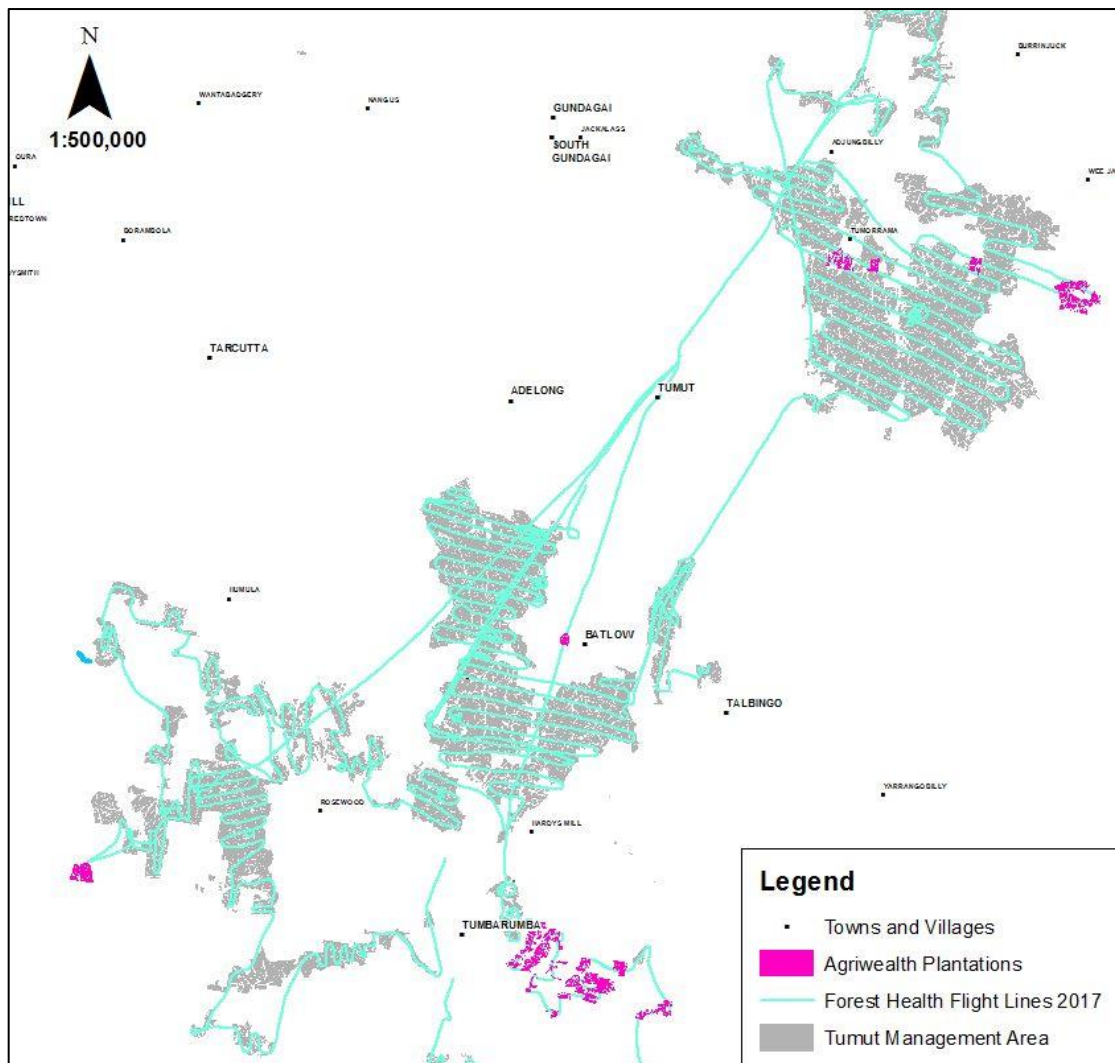


Figure 4: Tumut management area forest health aerial surveillance flight path – winter 2017

Low to moderate levels of *Dothistroma* infection continues to be present, with higher infection levels adjacent to drainage lines and lower sections of the plantation. The current level and extent of *Dothistroma* across the plantation is consistent with previous years observations, with infection levels generally low for the majority of the plantation. Treatment of *Dothistroma* is not recommended for the level of infection currently observed.

Summary of Activities undertaken

- Forest health surveillance and monitoring
- Access for fire protection

Summary of Activities Planned for 2017/2018

- Forest health surveillance and monitoring
- Maintenance of access for fire protection

Fire Incidents

No fire incidents occurred within or close to the plantation during the reporting period

Other Management Issues

Nil

Report Prepared by

Charles Taylor

Charlie Taylor

STEWARDSHIP AND FIRE MANAGER

SNOWY REGION

For

Bob Germantse

Regional Manager Snowy

Monthly Rainfall Statistics

