

AgriWealth Pty Limited

**2011 SOFTWOOD TIMBER PROJECT
&
2011 TIMBER PROJECT**



2013-2014 Annual Report

Context

This annual report has been prepared in accordance with Schedule 1 Part 3(h) of the Forestry Management Contract between AgriWealth Pty Limited and the Forestry Commission of New South Wales (now trading as the Forestry Corporation of NSW) for the 2011 Timber Project.

Background

The 2011 Project is located at Wandalla, 40 kilometres south west of Oberon within the Bathurst management area of Northern Softwoods (previously known as Macquarie Region). The project comprises 50 hectares of plantation that was established in 2012. Planting occurred in winter using GF19 containerised stock. No further planting or survival assessments have taken place in the last 12 months. Being the fourth planting program at Wandalla the plantation is referred to as Stage 4.

Overview

The first growing season for the 2012 age class was difficult due to below average rainfall in spring and early summer. The following year proved no easier with below average rainfall and above average temperatures (see figures 1 & 2 below). Despite this, when the age class was inspected in June 2014 the crop does not appear to have been harmed by what were very challenging conditions over the spring and summer.

Planting

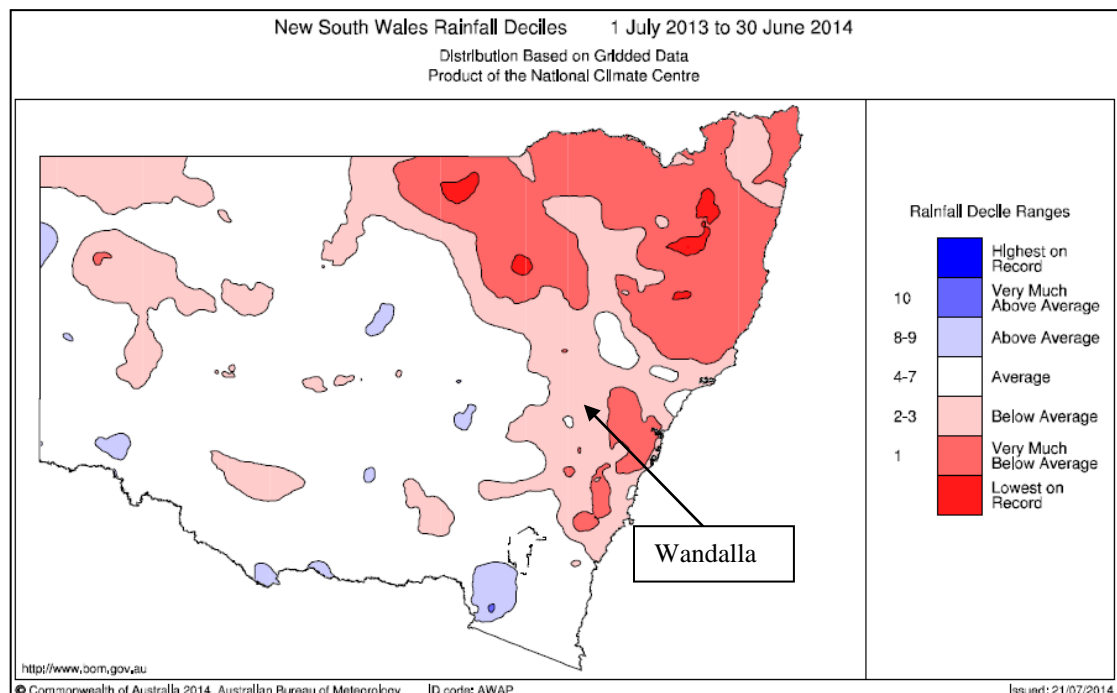


Figure 1: NSW Rainfall deciles - 1 July 2013 to 30 June 2014

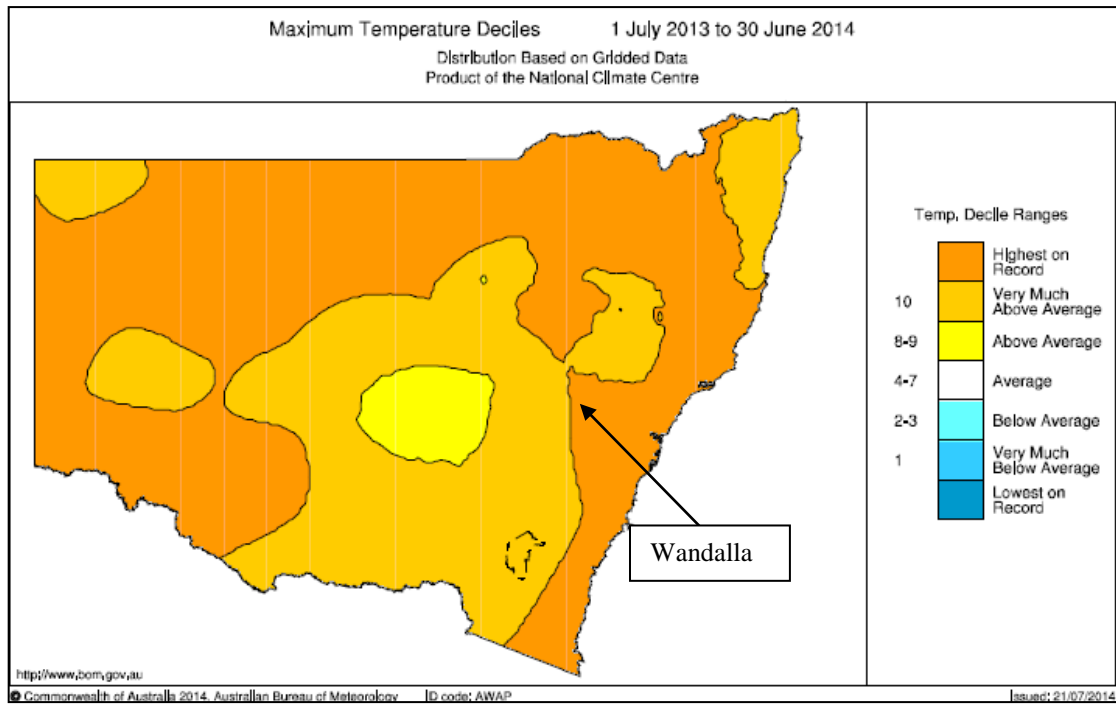


Figure 2: NSW Maximum temperature deciles - 1 July 2013 to 30 June 2014



Figure 3: Wandalla Stage 4 – two year old trees showing good survival, vigour and form.

Biosecurity and Forest Health

Forest health aerial surveillance and monitoring was undertaken in Winter 2013 (refer figure 4). No significant issues were identified.

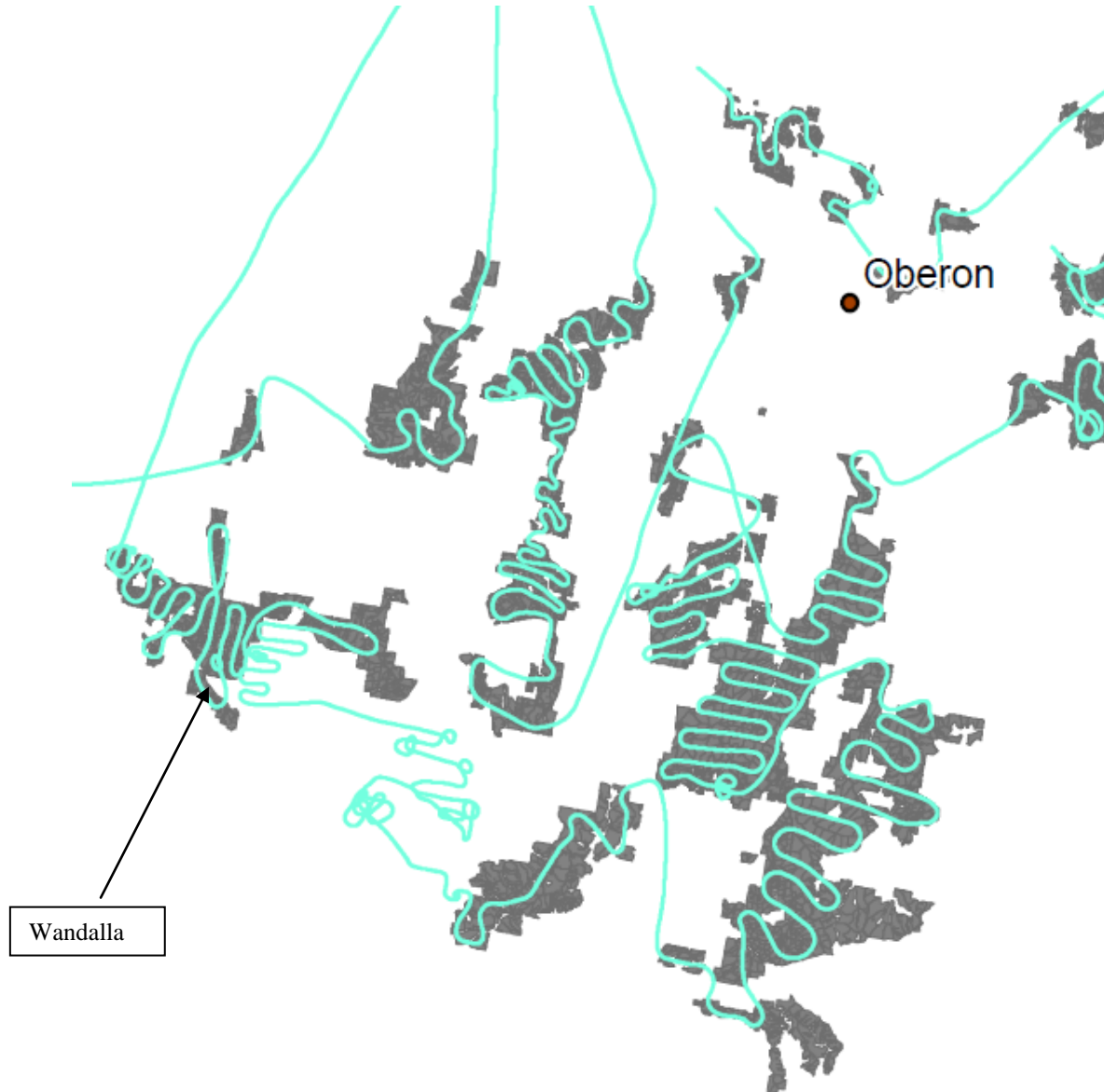


Figure 4: Bathurst management forest health aerial surveillance flight path – winter 2013.

Ground inspection confirmed the 2012 age class to be in excellent health and free of pest interference. There is some bidi bush appearing but at this stage tree survival and growth are not visibly impaired.

Fire Incidents

No fire incidents have occurred within or close to any of the plantations. Access through the forest is good with roads generally being relatively clean and weed free. This will greatly assist fire attack and containment should the need arise.

Other Management Issues
Nil

Report Prepared by

William Shearman
FOREST MODELLER
NORTHERN SOFTWOODS